

2023 DEMOGRAPHICS

1 Mile | 3 Miles | 5 Miles



Population

8,900 | 84,570 | 206,484



Daytime Population

19,656 | 122,729 | 270,222



Median Household Income

\$57,705 | \$82,486 | \$96,467

RETAIL FOR SALE OR LEASE

10533 Page Avenue | Overland, Missouri 63132

1,400 SF | Lease Rate: \$25.00/SF, NNN | Sale Price: \$525,000

PROPERTY DETAILS

Free-standing building

Drive-thru

Great visibility from Page Avenue

Strong retail node

Page Avenue - 30,292 VPD

Evan Barnett

314.785.7678

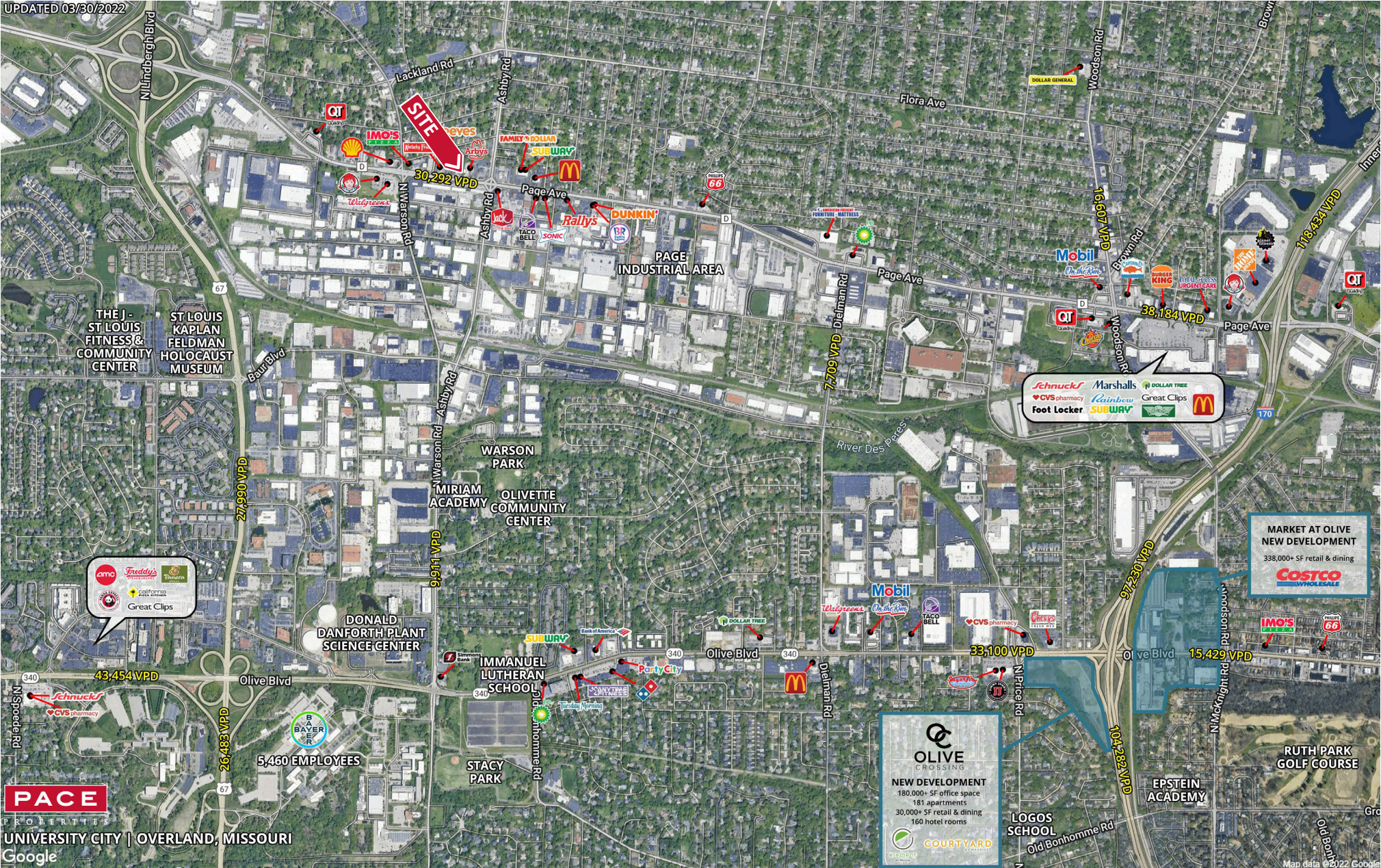
ebarnett@paceproperties.com

[PACEPROPERTIES.COM](https://www.paceproperties.com) | 314.968.9898

1401 South Brentwood Boulevard, Suite 900 | St. Louis, Missouri 63144

The information contained herein is not warranted, although it has been obtained from the owner/landlord of the subject property or from other sources that Pace Properties, Inc. deems reliable, and is subject to change without notice. Owner/landlord and Pace Properties, Inc. make no representations as to the environmental condition of the subject property and recommend tenant's independent investigation.

Trade Area Aerial



PACE
 PROPERTIES
 UNIVERSITY CITY | OVERLAND, MISSOURI
 Google

PACEPROPERTIES.COM | 314.968.9898

1401 South Brentwood Boulevard, Suite 900 | St. Louis, Missouri 63144

The information contained herein is not warranted, although it has been obtained from the owner/landlord of the subject property or from other sources that Pace Properties, Inc. deems reliable, and is subject to change without notice. Owner/landlord and Pace Properties, Inc. make no representations as to the environmental condition of the subject property and recommend tenant's independent investigation.