

2022 DEMOGRAPHICS

1 Mile | 3 Miles | 5 Miles



Population

3,327 | 26,657 | 74,027



Daytime Population

2,107 | 12,340 | 39,020



Median Household Income

\$113,234 | \$115,470 | \$95,972

OUTLOTS AVAILABLE FOR GROUND LEASE
 3410 Southwest Market Street | Lee's Summit, Missouri 64082
 0.79 & 2.2 Acre Outlots | Call for Details

PROPERTY DETAILS

Outlots of Walmart Supercenter in high-growth area of South Lee's Summit, Missouri

Graded, pad-ready sites

Excellent site for restaurant, shadow-anchored retail, or bank

Other retailers in the area include Price Chopper, Home Depot, Lowe's, Target, Kohl's, McDonald's, Arby's, Taco Bell, Quik Trip, Sherwin Williams, and more

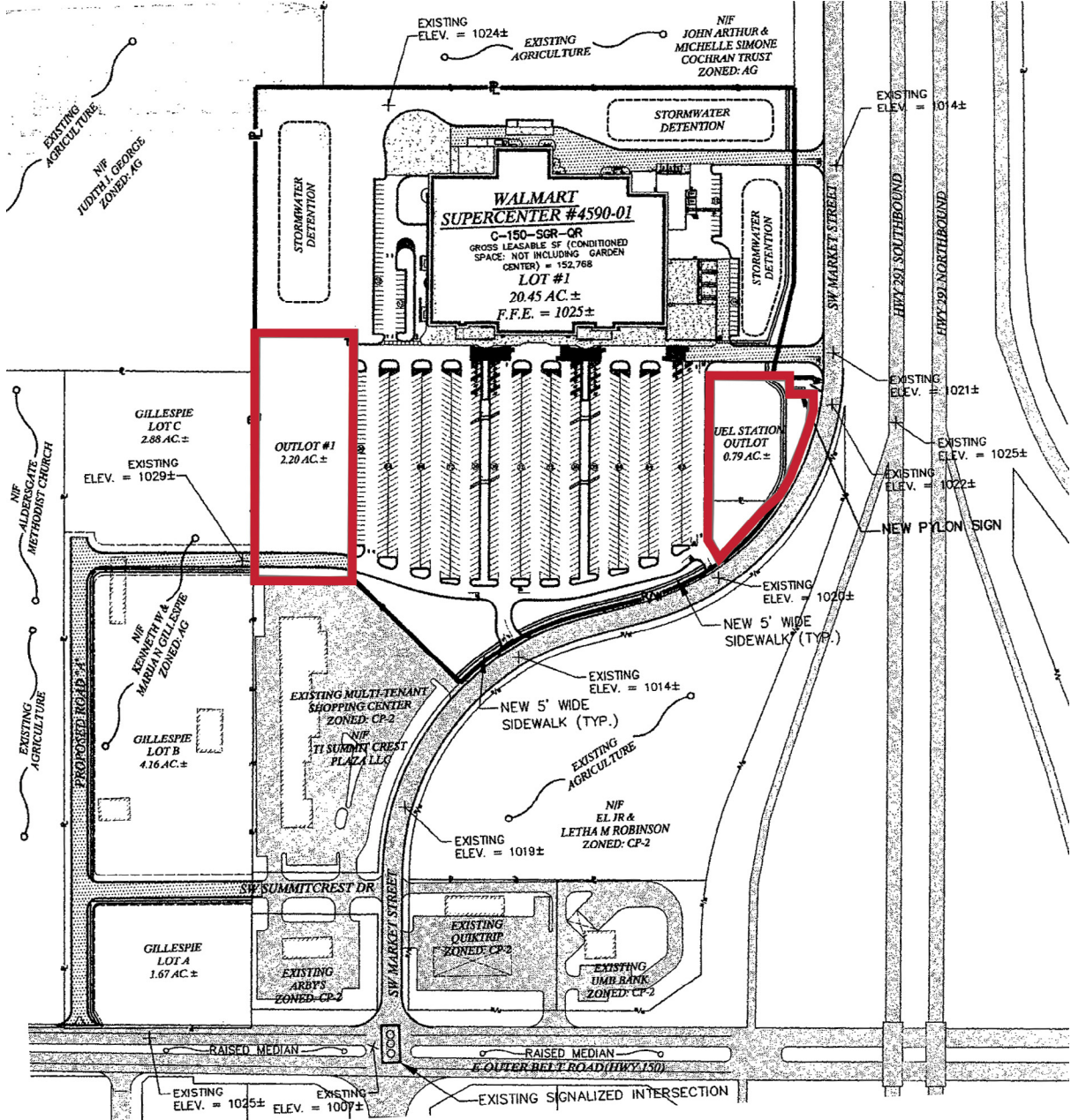
MO 291 - 28,449 VPD | MO 150 - 19,559 VPD

Jim Rosen, CCIM
 314.785.7625
 jrosen@paceproperties.com

Trade Area Aerial



Site Plan



The information contained herein is not warranted, although it has been obtained from the owner/landlord of the subject property or from other sources that Pace Properties, Inc. deems reliable, and is subject to change without notice. Owner/landlord and Pace Properties, Inc. make no representations as to the environmental condition of the subject property and recommend tenant's independent investigation.