

## 2023 DEMOGRAPHICS

1 Mile | 3 Miles | 5 Miles



### Population

18,741 | 130,042 | 329,433



### Daytime Population

13,461 | 147,065 | 321,576



### Median Household Income

\$83,719 | \$80,493 | \$73,996

# RETAIL/OFFICE FOR LEASE

6193-6195 Delmar Boulevard & 616 North Skinker Boulevard

St. Louis, Missouri 63112

603 - 1,815 SF | Call for Details | Triple Nets: \$4.51/SF

## PROPERTY DETAILS

Approximately 28' of frontage along Delmar Boulevard  
for 1,233 SF vacancy

Located at Delmar Boulevard and Skinker Boulevard with great visibility

Situated across from The Link in The Loop, a new mixed-use  
development anchored by retailers CVS, iTap, and office tenants  
Christner Architects & Washington University

Delmar Boulevard - 11,119 VPD | Skinker Boulevard - 18,758 VPD

### Kate Grewe

314.785.7662

kgrewe@paceproperties.com

### Lauren Berry

314.785.7632

lberry@paceproperties.com

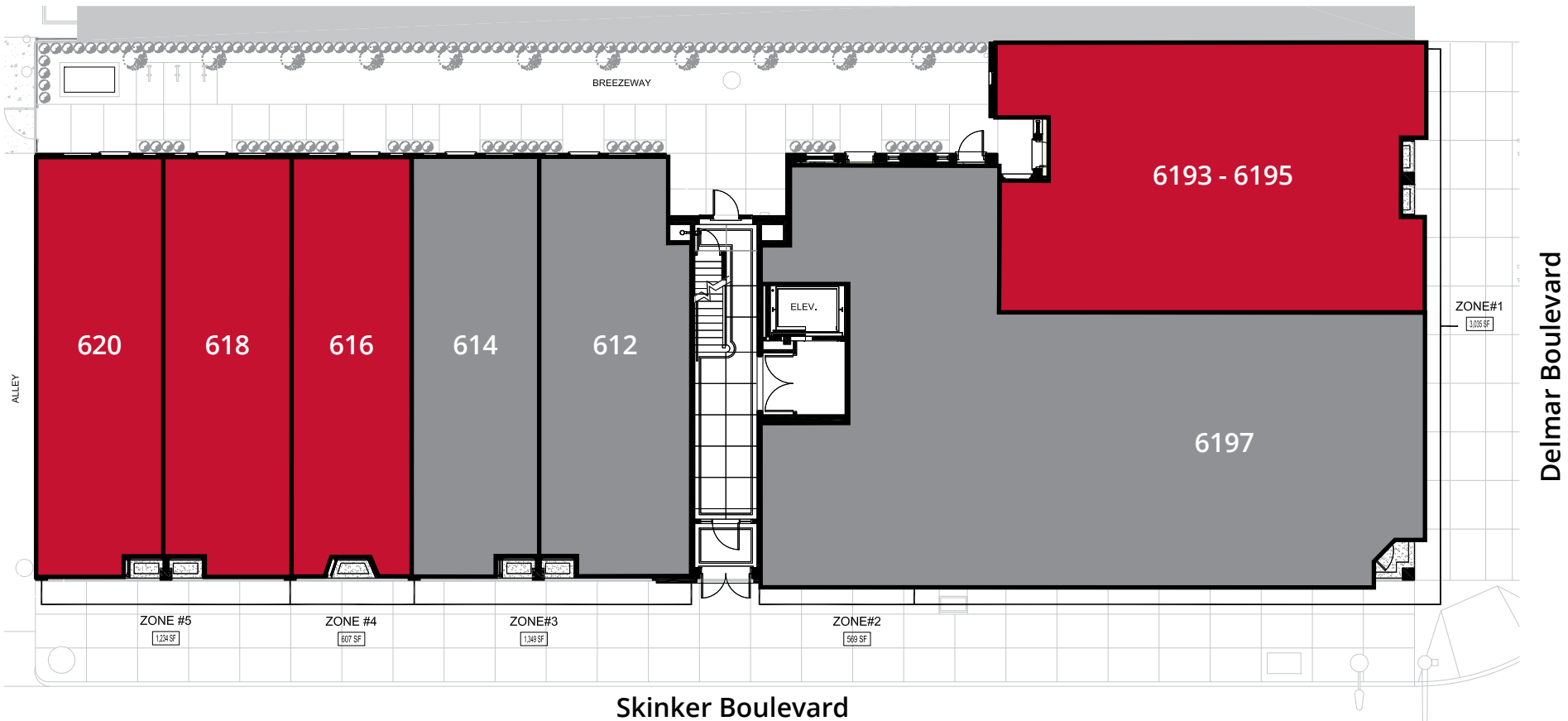
PACEPROPERTIES.COM | 314.968.9898

1401 South Brentwood Boulevard, Suite 900 | St. Louis, Missouri 63144

The information contained herein is not warranted, although it has been obtained from the owner/landlord of the subject property or from other sources that Pace Properties, Inc. deems reliable, and is subject to change without notice. Owner/landlord and Pace Properties, Inc. make no representations as to the environmental condition of the subject property and recommend tenant's independent investigation.



# Site Plan



Space	Status	SF
6193 - 6195	AVAILABLE	1,233
6197	Up Late	2,293
612	Sid's Eyebrow Threading	719
614	Acclimate St. Louis	604
616	AVAILABLE	607
618	AVAILABLE	605
620	AVAILABLE	603

\*Suites 620, 618, & 616 can be combined for 1,815 SF  
 \*\*Grade change between suites 616 & 618

PACEPROPERTIES.COM | 314.968.9898

1401 South Brentwood Boulevard, Suite 900 | St. Louis, Missouri 63144

The information contained herein is not warranted, although it has been obtained from the owner/landlord of the subject property or from other sources that Pace Properties, Inc. deems reliable, and is subject to change without notice. Owner/landlord and Pace Properties, Inc. make no representations as to the environmental condition of the subject property and recommend tenant's independent investigation.

# Floor Plan

