

**2022 DEMOGRAPHICS**

1 Mile | 3 Miles | 5 Miles



**Population**

11,453 | 100,044 | 236,338



**Daytime Population**

8,875 | 61,840 | 163,411



**Median Household Income**

\$35,379 | \$41,330 | \$45,219

**LAND FOR SALE**  
 9161 West Florissant Avenue | Ferguson, Missouri 63136  
 1.67 Acres | \$425,000

**PROPERTY DETAILS**

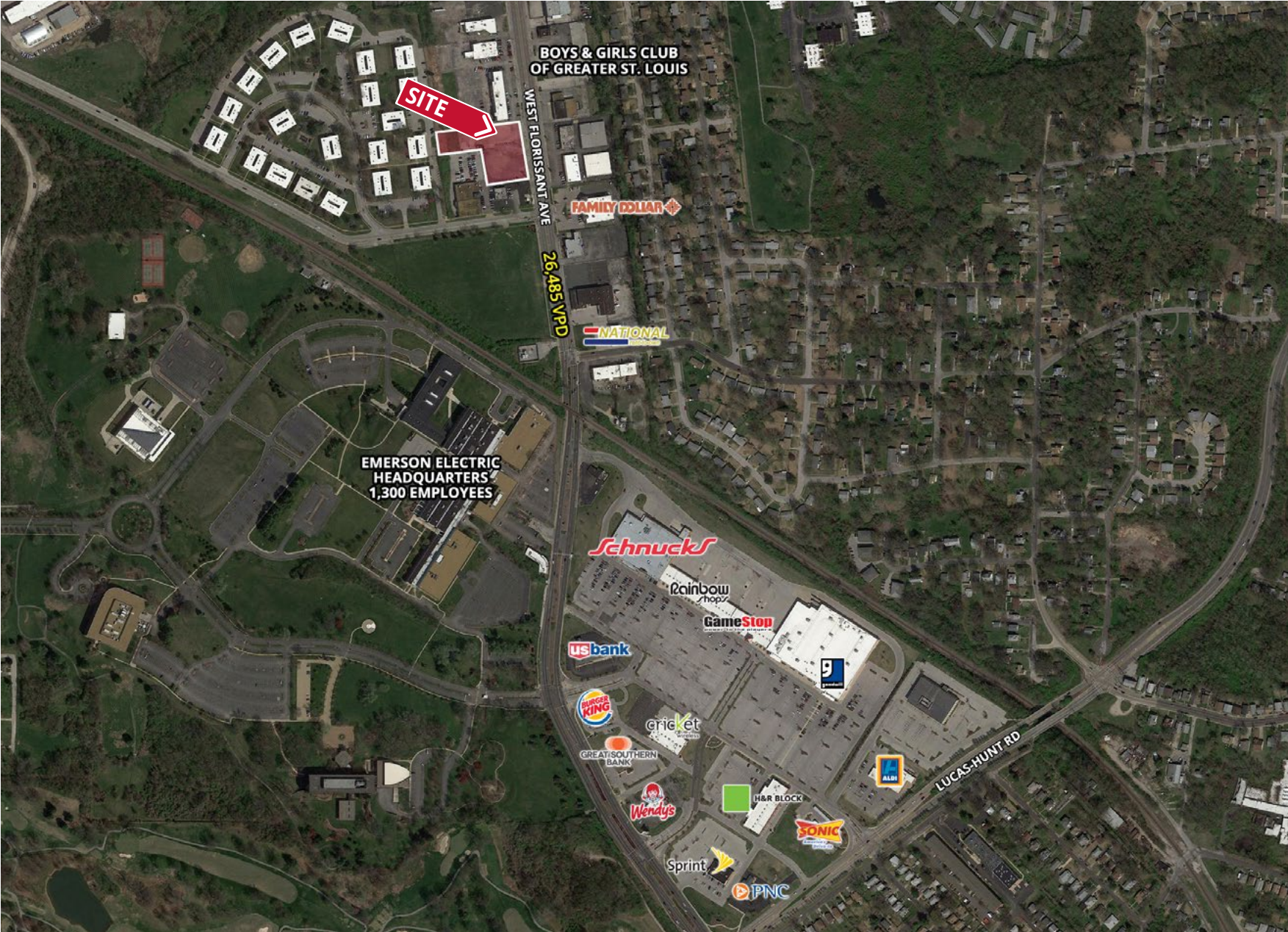
- Easy access
- Great visibility from West Florissant Avenue
- Ample parking

Area retailers include: Schnucks, Aldi, PNC Bank, US Bank, Great Southern Bank, Sprint, Cricket, Burger King, Wendy's, & Sonic

**Kate Grewe**  
 314.785.7662  
 kgrewe@paceproperties.com

**Patrick Willett**  
 314.785.7631  
 pwillett@paceproperties.com

# Zoomed Aerial



PACEPROPERTIES.COM | 314.968.9898  
1401 South Brentwood Boulevard, Suite 900 | St. Louis, Missouri 63144

The information contained herein is not warranted, although it has been obtained from the owner/landlord of the subject property or from other sources that Pace Properties, Inc. deems reliable, and is subject to change without notice. Owner/landlord and Pace Properties, Inc. make no representations as to the environmental condition of the subject property and recommend tenant's independent investigation.