

**2021 DEMOGRAPHICS**  
 1 Mile | 3 Miles | 5 Miles

**Population**  
 1,785 | 33,007 | 44,687

**Employees**  
 12,194 | 27,286 | 30,271

**Median Household Income**  
 \$35,199 | \$49,073 | \$53,503

**LAND AVAILABLE**  
 Blattner Drive & South Silver Springs Road | Cape Girardeau, Missouri 63703  
 Up to 4.56 Acres | Call for details

**PROPERTY DETAILS**  
 Prime development land  
 Near West Park Mall  
 Wraps corners of Blattner Drive, Silver Springs Road,  
 and Bloomfield Road  
 Potential uses include retail, office, financial, or medical  
 Bloomfield Road: 8,780 VPD

**Ryan Geringer**  
 314.785.7642  
 rgeringer@paceproperties.com

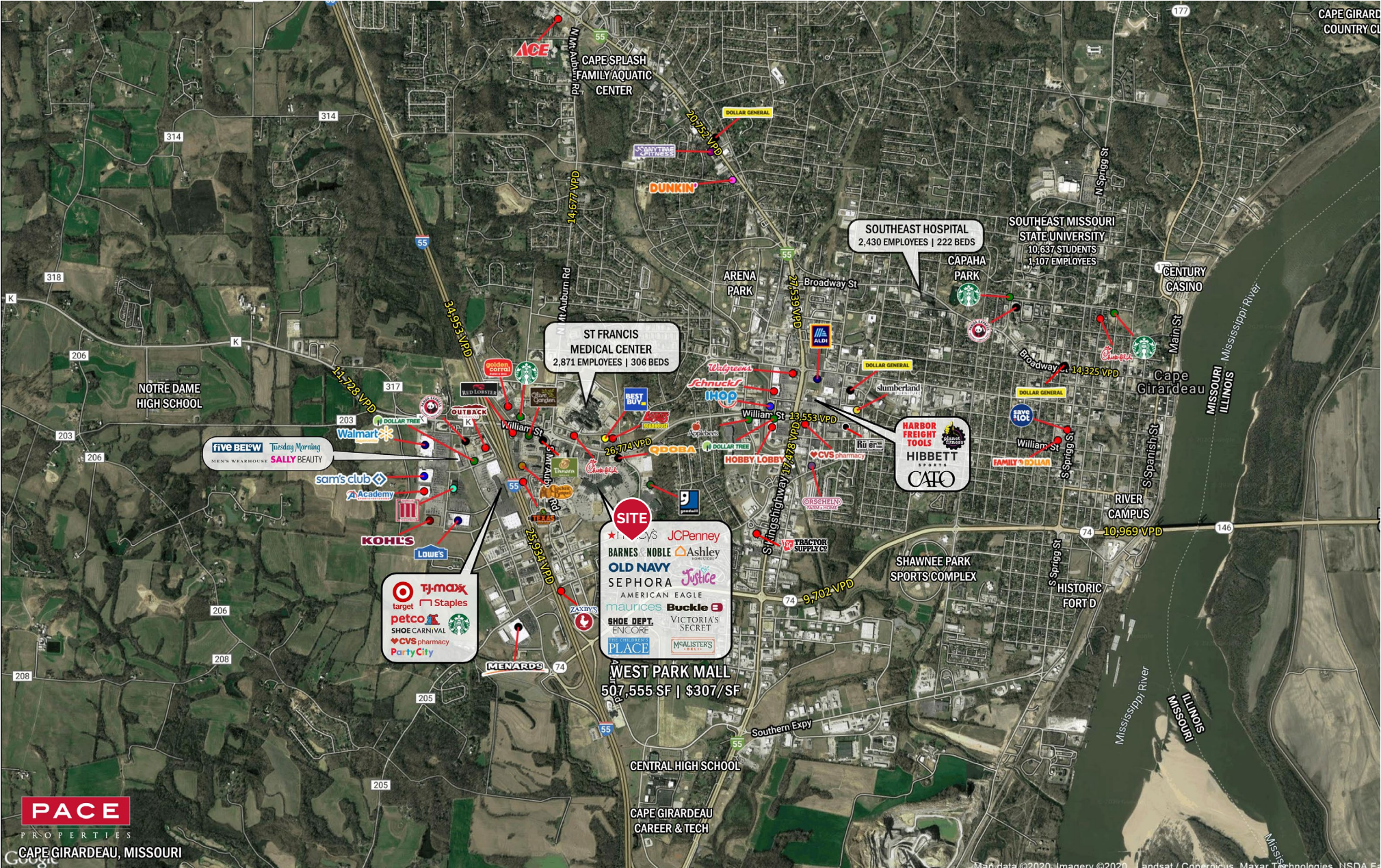
**Patrick Willett**  
 314.785.7631  
 pwillett@paceproperties.com

**Mike Swearngin**  
 314.785.7625  
 mswearngin@paceproperties.com

The information contained herein is not warranted, although it has been obtained from the owner/landlord of the subject property or from other sources that Pace Properties, Inc. deems reliable, and is subject to change without notice. Owner/landlord and Pace Properties, Inc. make no representations as to the environmental condition of the subject property and recommend tenant's independent investigation.



# Trade Area Aerial



**PACE**  
PROPERTIES  
CAPE GIRARDEAU, MISSOURI



# Zoomed Aerial



PACEPROPERTIES.COM | 314.968.9898

1401 South Brentwood Boulevard, Suite 900 | St. Louis, Missouri 63144

The information contained herein is not warranted, although it has been obtained from the owner/landlord of the subject property or from other sources that Pace Properties, Inc. deems reliable, and is subject to change without notice. Owner/landlord and Pace Properties, Inc. make no representations as to the environmental condition of the subject property and recommend tenant's independent investigation.