



2020 DEMOGRAPHICS

1 Mile | 3 Miles | 5 Miles



Population

919 | 28,144 | 45,020



Employees

10,434 | 30,108 | 38,429



Median Household Income

\$47,508 | \$50,721 | \$51,294

EXISTING RESTAURANT SPACE FOR LEASE

Center 55 | 118 Siemers Drive | Cape Girardeau, Missouri 63701

4,918 SF | Call for Details | Triple Nets: \$6.84/SF

PROPERTY DETAILS

Strip center located at entrance of West Cape retail node

Regional shopping hub for southeastern Missouri

Easy Interstate access

Excellent co-tenancy

Pylon signage available

Siemers Drive - 9,924 VPD | Interstate 55 - 25,934 VPD

Connor Wiemann

314.785.7627

cwiemann@paceproperties.com

Mike Sweargin

314.785.7625

msweargin@paceproperties.com

Patrick Willett

314.785.7631

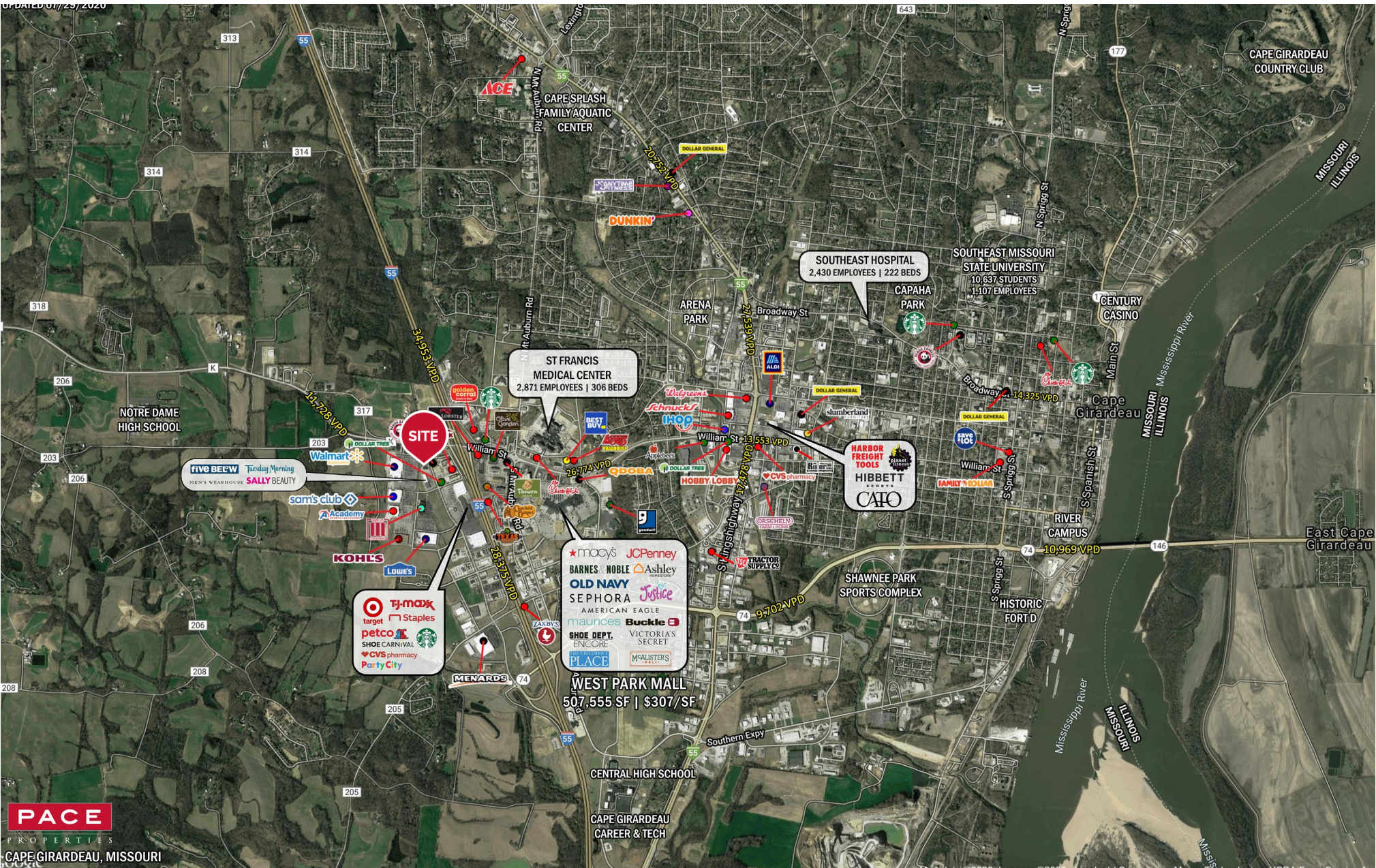
pwillett@paceproperties.com

PACEPROPERTIES.COM | 314.968.9898

1401 South Brentwood Boulevard, Suite 900 | St. Louis, Missouri 63144

The information contained herein is not warranted, although it has been obtained from the owner/landlord of the subject property or from other sources that Pace Properties, Inc. deems reliable, and is subject to change without notice. Owner/landlord and Pace Properties, Inc. make no representations as to the environmental condition of the subject property and recommend tenant's independent investigation.

Trade Area Aerial



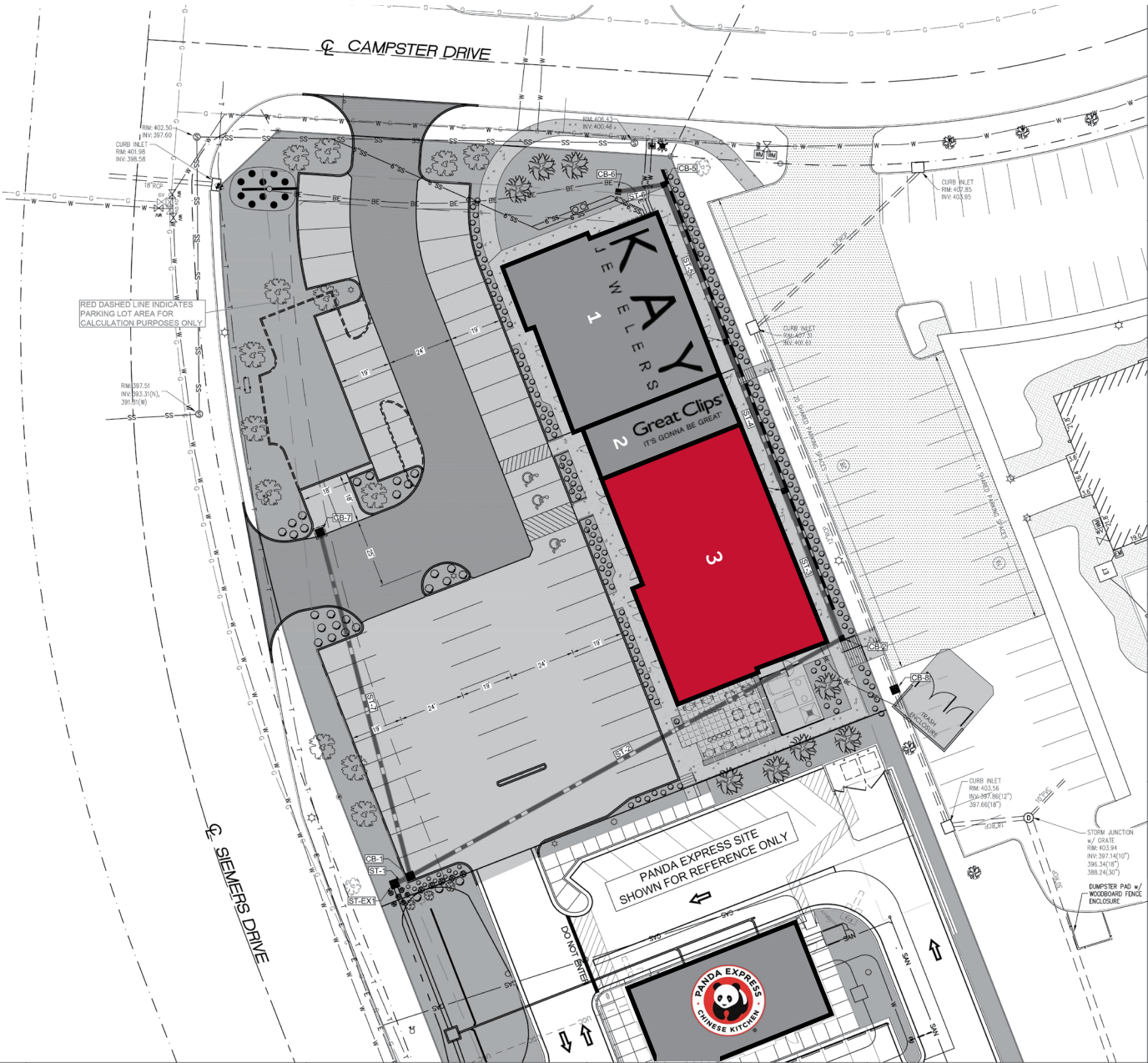
PACE
PROPERTIES
CAPE GIRARDEAU, MISSOURI

PACEPROPERTIES.COM | 314.968.9898

1401 South Brentwood Boulevard, Suite 900 | St. Louis, Missouri 63144

The information contained herein is not warranted, although it has been obtained from the owner/landlord of the subject property or from other sources that Pace Properties, Inc. deems reliable, and is subject to change without notice. Owner/landlord and Pace Properties, Inc. make no representations as to the environmental condition of the subject property and recommend tenant's independent investigation.

Site Plan



Space	Status	SF
1	Kay Jewelers	3,355
2	Great Clips	1,100
3	AVAILABLE	4,918
TOTAL		9,373

