

2023 DEMOGRAPHICS

1 Mile | 3 Miles | 5 Miles



Population

13,100 | 137,519 | 356,587



Daytime Population

8,776 | 150,495 | 343,022



Median Household Income

\$67,248 | \$72,948 | \$70,803

RETAIL FOR LEASE

Expo at Forest Park | 299 DeBaliviere Avenue | St. Louis, Missouri 63112
2,098 - 14,779 SF | Lease Rate: \$25.00/SF, NNN

PROPERTY DETAILS

Join Starbucks and their latest urban concept
Strategically located between Forest Park to the south,
Central West End to the east, and Clayton to the west

Great parking and access to the MetroLink

DeBaliviere Avenue - 5,715 VPD
Forest Park Parkway - 19,743 VPD

John Shuff

314.785.7630

jshuff@paceproperties.com

Kate Grewe

314.785.7662

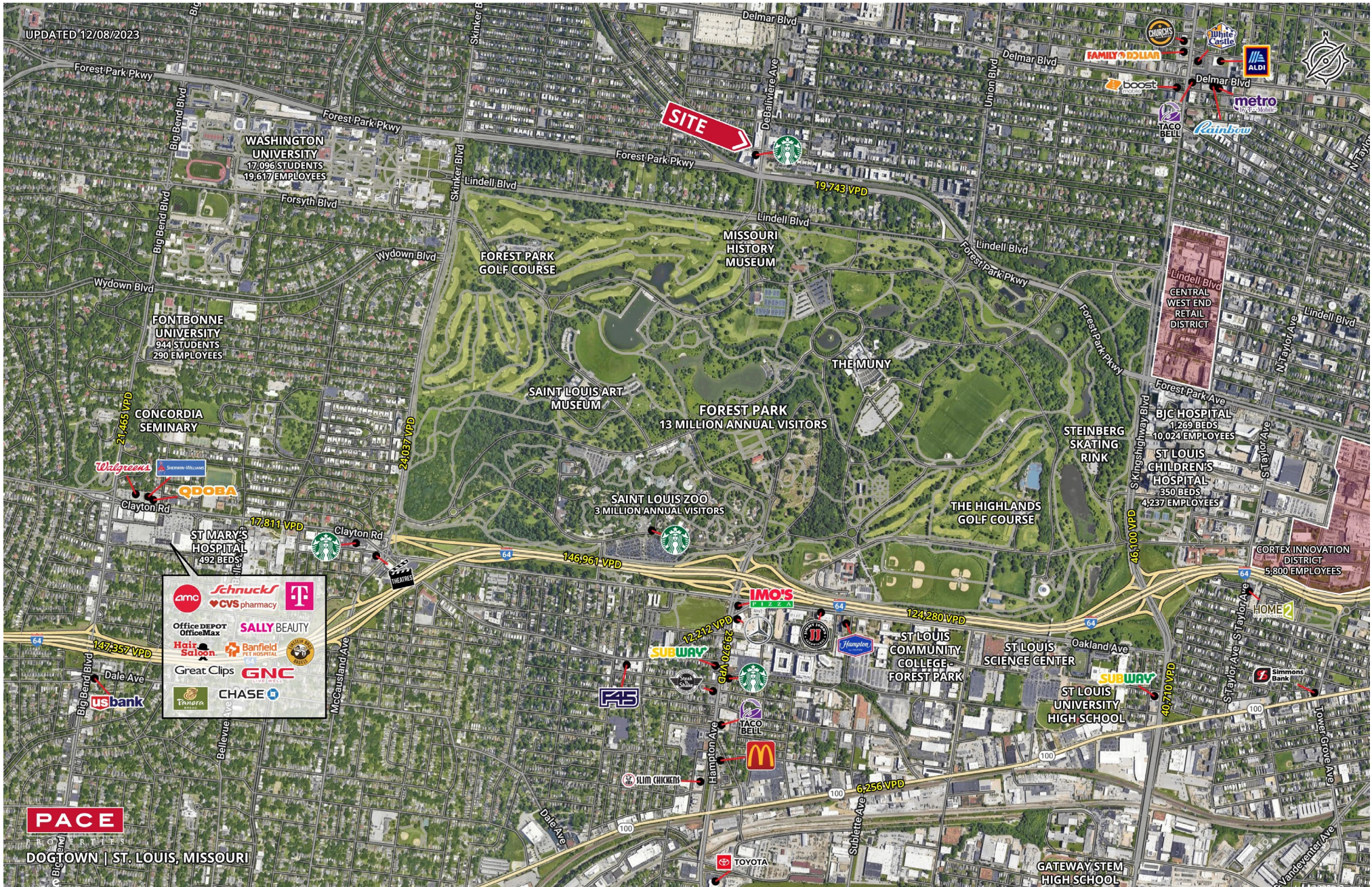
kgrewe@paceproperties.com

[PACEPROPERTIES.COM](https://www.paceproperties.com) | 314.968.9898

1401 South Brentwood Boulevard, Suite 900 | St. Louis, Missouri 63144

The information contained herein is not warranted, although it has been obtained from the owner/landlord of the subject property or from other sources that Pace Properties, Inc. deems reliable, and is subject to change without notice. Owner/landlord and Pace Properties, Inc. make no representations as to the environmental condition of the subject property and recommend tenant's independent investigation.

Trade Area Aerial

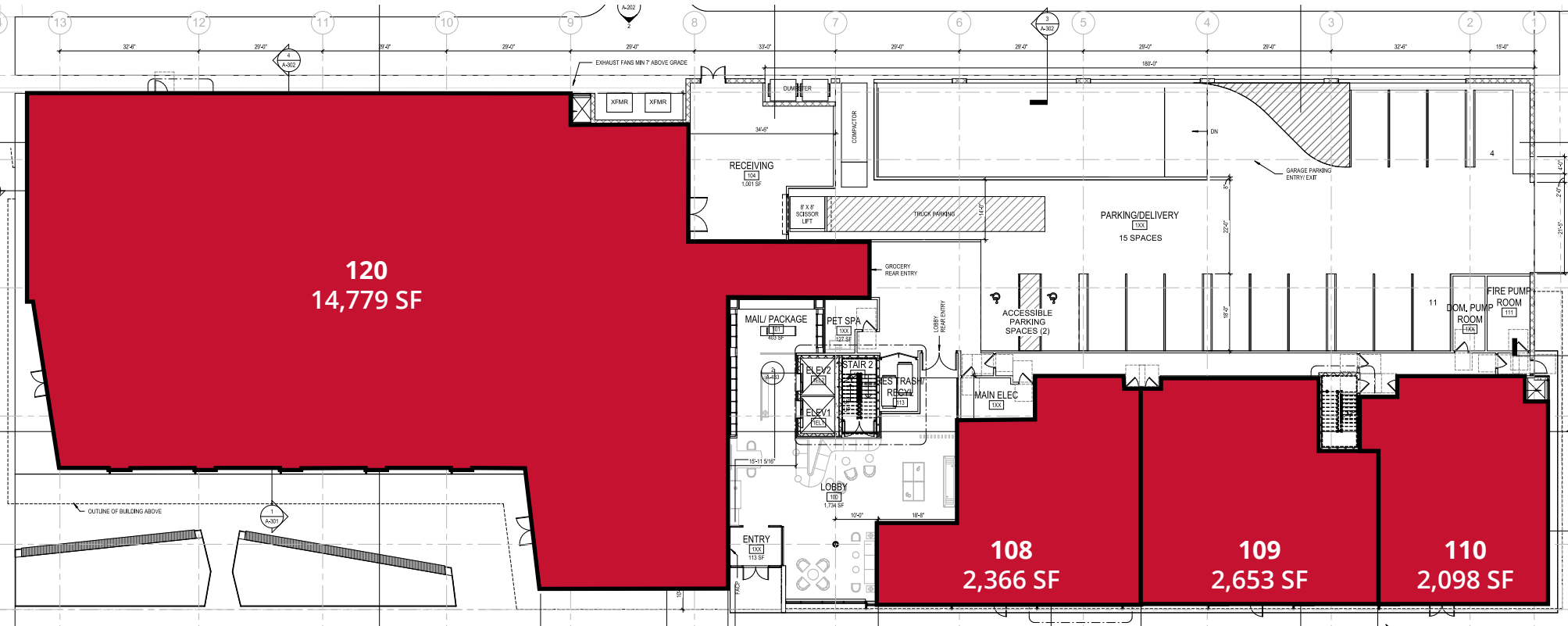


PACEPROPERTIES.COM | 314.968.9898

1401 South Brentwood Boulevard, Suite 900 | St. Louis, Missouri 63144

The information contained herein is not warranted, although it has been obtained from the owner/landlord of the subject property or from other sources that Pace Properties, Inc. deems reliable, and is subject to change without notice. Owner/landlord and Pace Properties, Inc. make no representations as to the environmental condition of the subject property and recommend tenant's independent investigation.

Floor Plan - North Building



DeBaliviere Avenue



Floor Plan - South Building



DeBaliviere Avenue

The information contained herein is not warranted, although it has been obtained from the owner/landlord of the subject property or from other sources that Pace Properties, Inc. deems reliable, and is subject to change without notice. Owner/landlord and Pace Properties, Inc. make no representations as to the environmental condition of the subject property and recommend tenant's independent investigation.

