

## 2023 DEMOGRAPHICS

3 Mile | 5 Miles | 10 Miles



### Population

38,661 | 78,767 | 412,814



### Daytime Population

20,033 | 53,752 | 289,408



### Median Household Income

\$92,583 | \$90,667 | \$105,753

# RETAIL FOR LEASE

Gravois Village Plaza | 4560 Gravois Road | High Ridge, Missouri 63049  
2,100 - 22,250 SF | Call for Details | Triple Nets: \$2.00/SF

## PROPERTY DETAILS

Anchored by Farm & Home Supply

Great visibility from Highway 30

Large monument signage available

Ample parking

Highway 30 - 36,130 VPD

### Ashley Krekovich

314.785.7635

akrekovich@paceproperties.com

### Evan Barnett

314.785.7678

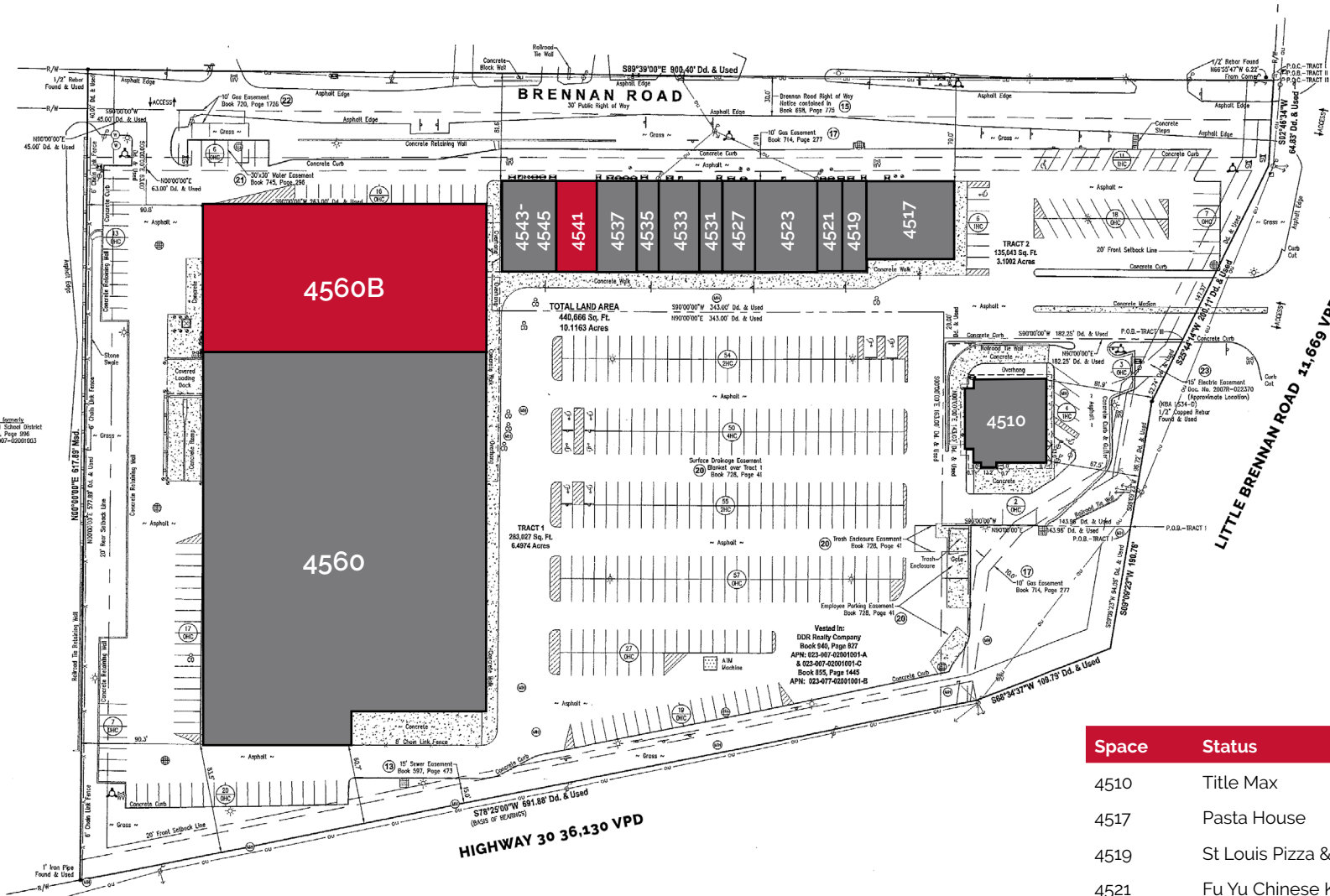
ebarnett@paceproperties.com

PACEPROPERTIES.COM | 314.968.9898

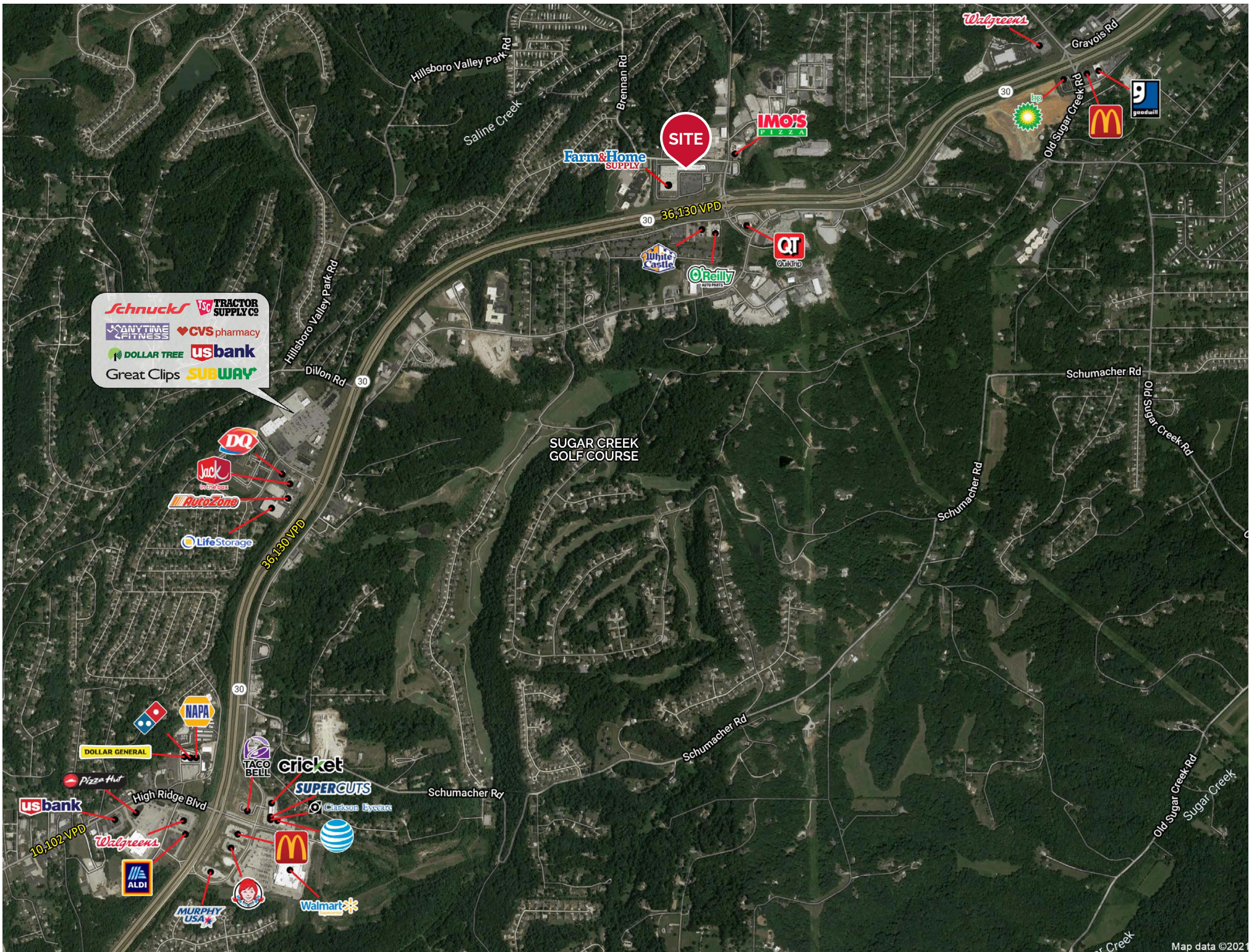
1401 South Brentwood Boulevard, Suite 900 | St. Louis, Missouri 63144

The information contained herein is not warranted, although it has been obtained from the owner/landlord of the subject property or from other sources that Pace Properties, Inc. deems reliable, and is subject to change without notice. Owner/landlord and Pace Properties, Inc. make no representations as to the environmental condition of the subject property and recommend tenant's independent investigation.

Map as Formed  
 Northwest R-1 School District  
 Book 498, Page 886  
 APR: 02-07-20001053



Space	Status	SF
4510	Title Max	4,000
4517	Pasta House	3,955
4519	St Louis Pizza & Wings	1,400
4521	Fu Yu Chinese Kitchen	1,400
4523	U Dance	3,150
4527	High Ridge Diner	1,750
4531	Salon	1,400
4533	Mattress By Appointment	2,100
4535	Farmers Insurance	1,400
4537	Chu Nails	2,100
4541	<b>AVAILABLE</b>	<b>2,100</b>
4543-4545	Schmol's 8 Ball	2,800
4560B	<b>AVAILABLE</b>	<b>22,250</b>
4560	Farm & Home Supply	65,169



**SITE**

36,130 VPD