

2023 DEMOGRAPHICS

3 Mile | 5 Miles | 10 Miles



Population

7,598 | 15,467 | 79,904



Daytime Population

5,307 | 8,726 | 44,539



Median Household Income

\$82,060 | \$83,426 | \$71,973

RETAIL FOR LEASE

Hillsboro Plaza | 10640 Business 21 | Hillsboro, Missouri 63050
3,840 SF | Call for Details

PROPERTY DETAILS

High profile endcap available

Great visibility

Full access fronting Business 21

Connor Wiemann

314.785.7627

cwiemann@paceproperties.com

Patrick Willett

314.785.7631

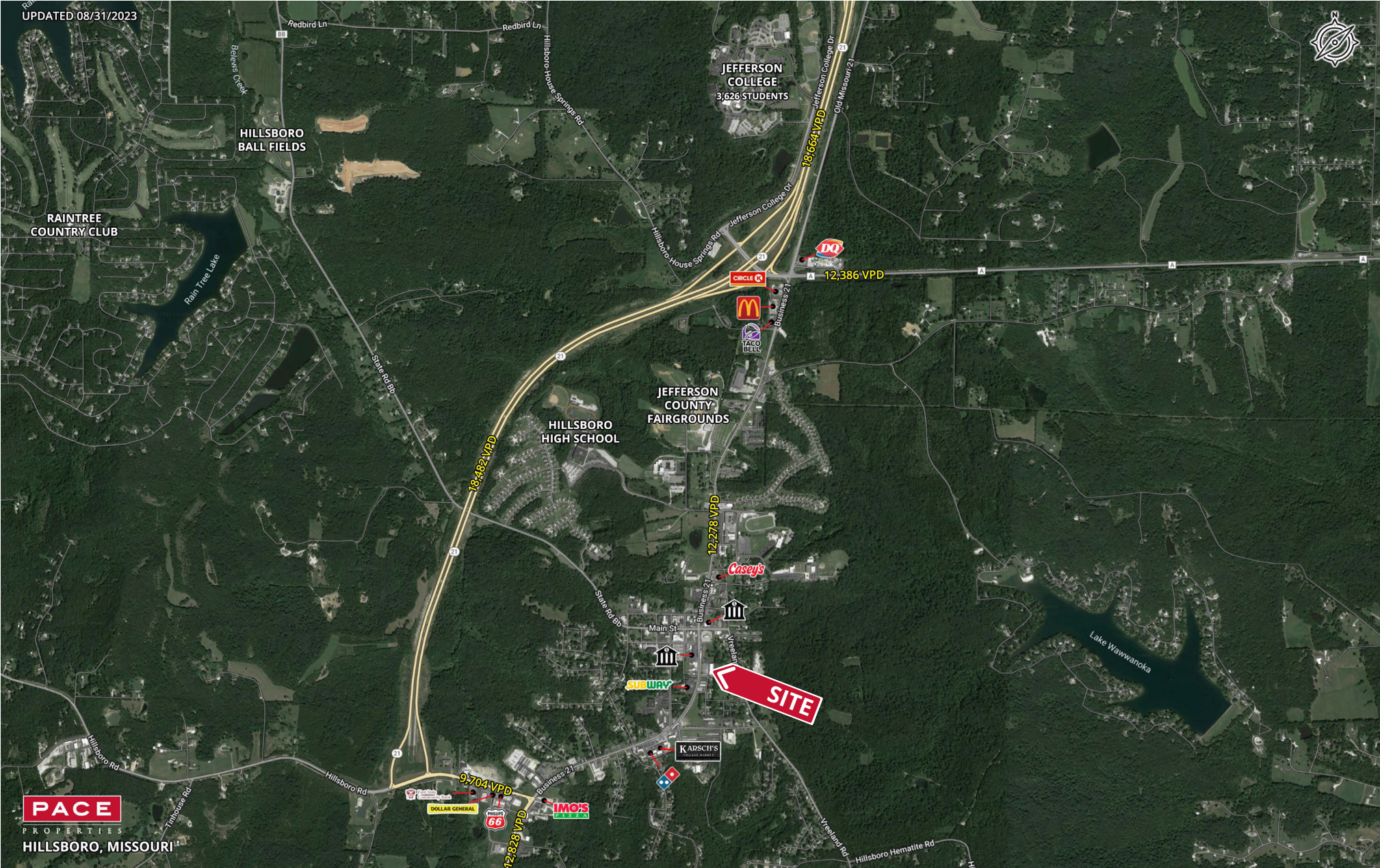
pwillett@paceproperties.com

PACEPROPERTIES.COM | 314.968.9898

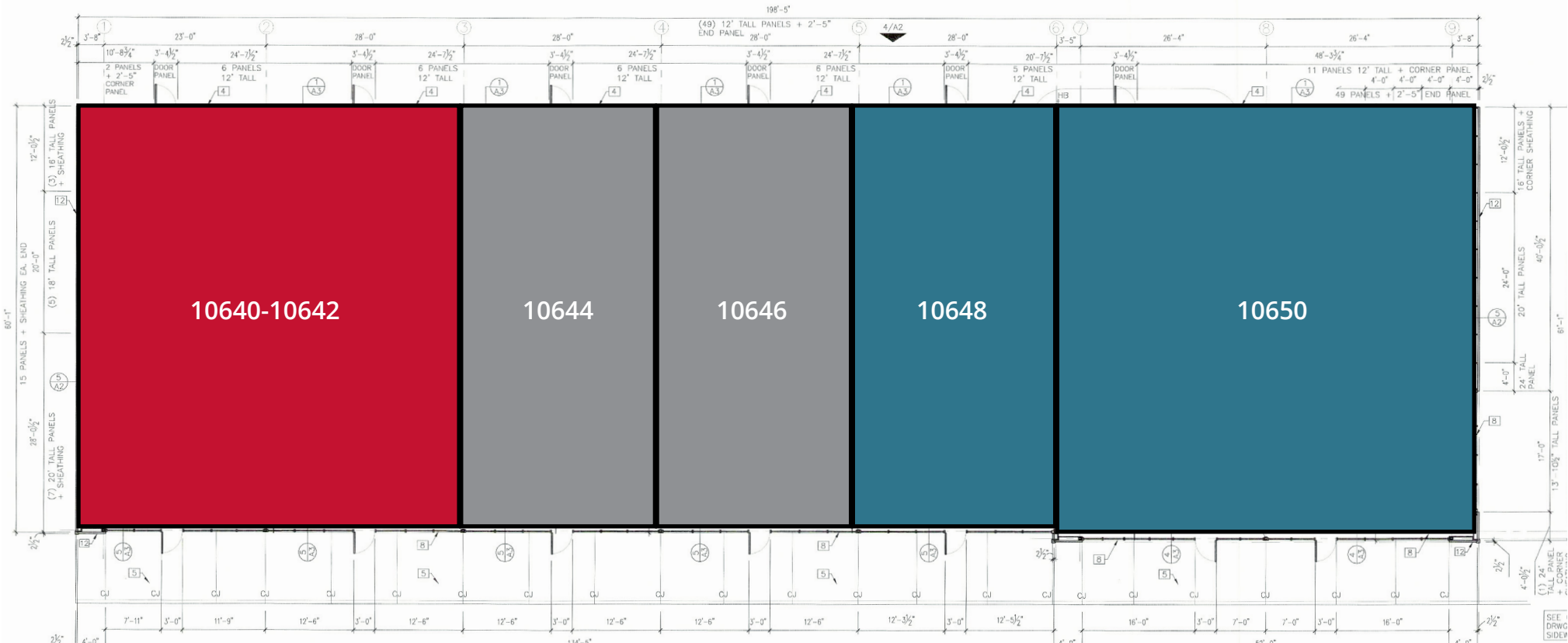
1401 South Brentwood Boulevard, Suite 900 | St. Louis, Missouri 63144

The information contained herein is not warranted, although it has been obtained from the owner/landlord of the subject property or from other sources that Pace Properties, Inc. deems reliable, and is subject to change without notice. Owner/landlord and Pace Properties, Inc. make no representations as to the environmental condition of the subject property and recommend tenant's independent investigation.

Trade Area Aerial



Site Plan



| Space | Status | SF |
|---------------|---------------|-------|
| 10640 - 10642 | AVAILABLE | 3,840 |
| 10644 | Avertest | 1,400 |
| 10646 | Happy China | 1,410 |
| 10648 | LEASE PENDING | 1,680 |
| 10650 | LEASE PENDING | 3,600 |

PACEPROPERTIES.COM | 314.968.9898

1401 South Brentwood Boulevard, Suite 900 | St. Louis, Missouri 63144

The information contained herein is not warranted, although it has been obtained from the owner/landlord of the subject property or from other sources that Pace Properties, Inc. deems reliable, and is subject to change without notice. Owner/landlord and Pace Properties, Inc. make no representations as to the environmental condition of the subject property and recommend tenant's independent investigation.