

**2023 DEMOGRAPHICS**  
3 Mile | 5 Miles | 10 Miles



**Population**

12,992 | 21,092 | 62,704



**Daytime Population**

11,819 | 15,912 | 42,701



**Median Household Income**

\$68,420 | \$72,170 | \$74,608

**LAND FOR SALE**  
Prairie Dell Road & East Central Court | Union, Missouri 63084  
7.28 Acres | Sale Price: \$927,000

**PROPERTY DETAILS**  
Phase 2 of Walmart development  
Walmart receives 1.6M annual visitors  
Shared signalized access  
Highway 50 - 23,835 VPD  
Zoned B-2

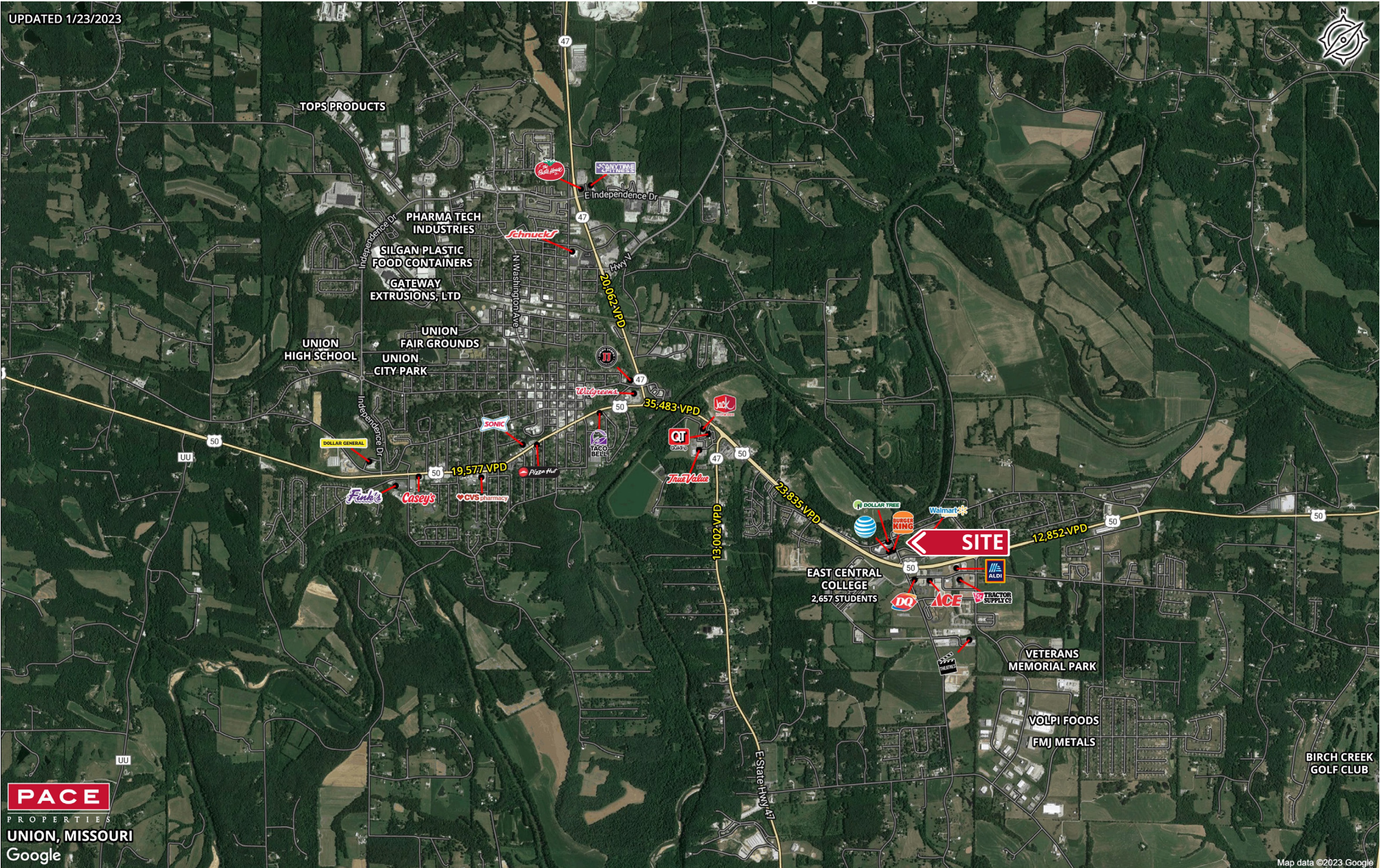
**Ryan Geringer**  
314.785.7642 | rgeringer@paceproperties.com  
**Connor Wiemann**  
314.785.7627 | cwiemann@paceproperties.com  
**Patrick Willett**  
314.785.7631 | pwillett@paceproperties.com

PACEPROPERTIES.COM | 314.968.9898

1401 South Brentwood Boulevard, Suite 900 | St. Louis, Missouri 63144

The information contained herein is not warranted, although it has been obtained from the owner/landlord of the subject property or from other sources that Pace Properties, Inc. deems reliable, and is subject to change without notice. Owner/landlord and Pace Properties, Inc. make no representations as to the environmental condition of the subject property and recommend tenant's independent investigation.

# Trade Area Aerial



PACEPROPERTIES.COM | 314.968.9898

1401 South Brentwood Boulevard, Suite 900 | St. Louis, Missouri 63144

The information contained herein is not warranted, although it has been obtained from the owner/landlord of the subject property or from other sources that Pace Properties, Inc. deems reliable, and is subject to change without notice. Owner/landlord and Pace Properties, Inc. make no representations as to the environmental condition of the subject property and recommend tenant's independent investigation.