

2023 DEMOGRAPHICS

3 Mile | 5 Miles | 10 Miles



Population

48,597 | 111,520 | 273,843



Daytime Population

26,628 | 59,903 | 154,692



Median Household Income

\$125,093 | \$117,357 | \$113,469

LAND FOR SALE OR LEASE RETAIL FOR LEASE OR BUILD TO SUIT

Highway N & Orf Road | Lake St. Louis, Missouri 63367

Land Available: 1 - 7.75 AC | Call for Details

1,400 - 6,700 SF | Call for Details

PROPERTY DETAILS

Easy access to & from Interstate 64

Build-to-suit locations & restaurant pads available

Strong demographics

Fast-growing retail destination

Highway N - 21,829 VPD

Evan Barnett

314.785.7678

ebarnett@paceproperties.com

Patrick Willett

314.785.7631

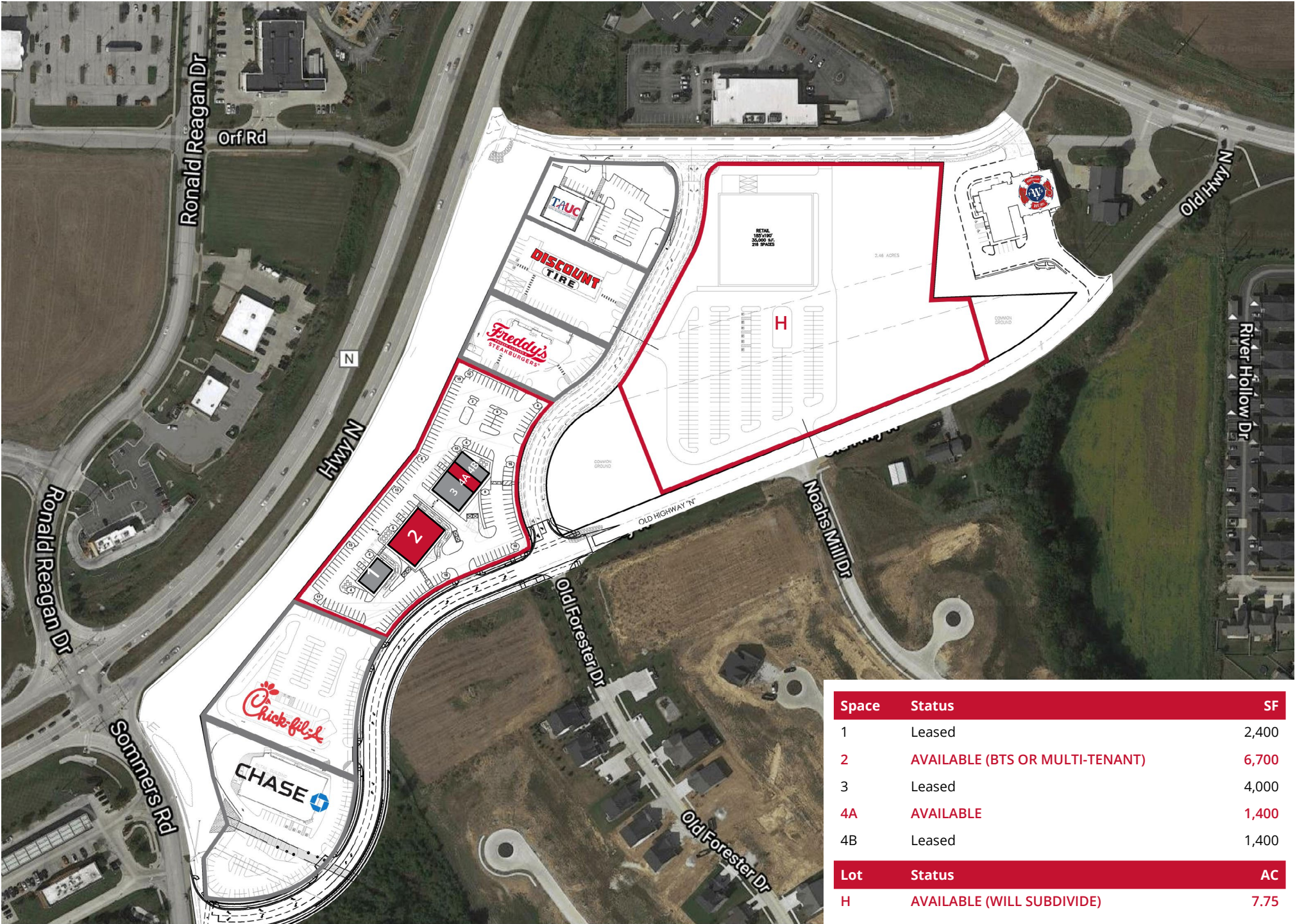
pwillett@paceproperties.com

PACEPROPERTIES.COM | 314.968.9898

1401 South Brentwood Boulevard, Suite 900 | St. Louis, Missouri 63144

The information contained herein is not warranted, although it has been obtained from the owner/landlord of the subject property or from other sources that Pace Properties, Inc. deems reliable, and is subject to change without notice. Owner/landlord and Pace Properties, Inc. make no representations as to the environmental condition of the subject property and recommend tenant's independent investigation.

Site Plan



Space	Status	SF
1	Leased	2,400
2	AVAILABLE (BTS OR MULTI-TENANT)	6,700
3	Leased	4,000
4A	AVAILABLE	1,400
4B	Leased	1,400
Lot	Status	AC
H	AVAILABLE (WILL SUBDIVIDE)	7.75