

2023 DEMOGRAPHICS

3 Mile | 5 Miles | 10 Miles



Population

13,502 | 21,154 | 63,256



Daytime Population

11,839 | 15,725 | 41,831



Median Household Income

\$71,547 | \$75,162 | \$78,014

FOR LEASE

Union Silo Plaza | Highway 50 & Prairie Dell Road | Union, Missouri 63084
1,400 - 3,392 SF | \$16.00-\$18.00/SF, NNN | Outlot: 0.55 Acre | Call for Details

PROPERTY DETAILS

Walmart shadow-anchored center

Great visibility to Highway 50

Signalized access

Highway 50 - 23,835 VPD

Connor Wiemann

314.785.7627

cwiemann@paceproperties.com

Ryan Geringer

314.785.7642

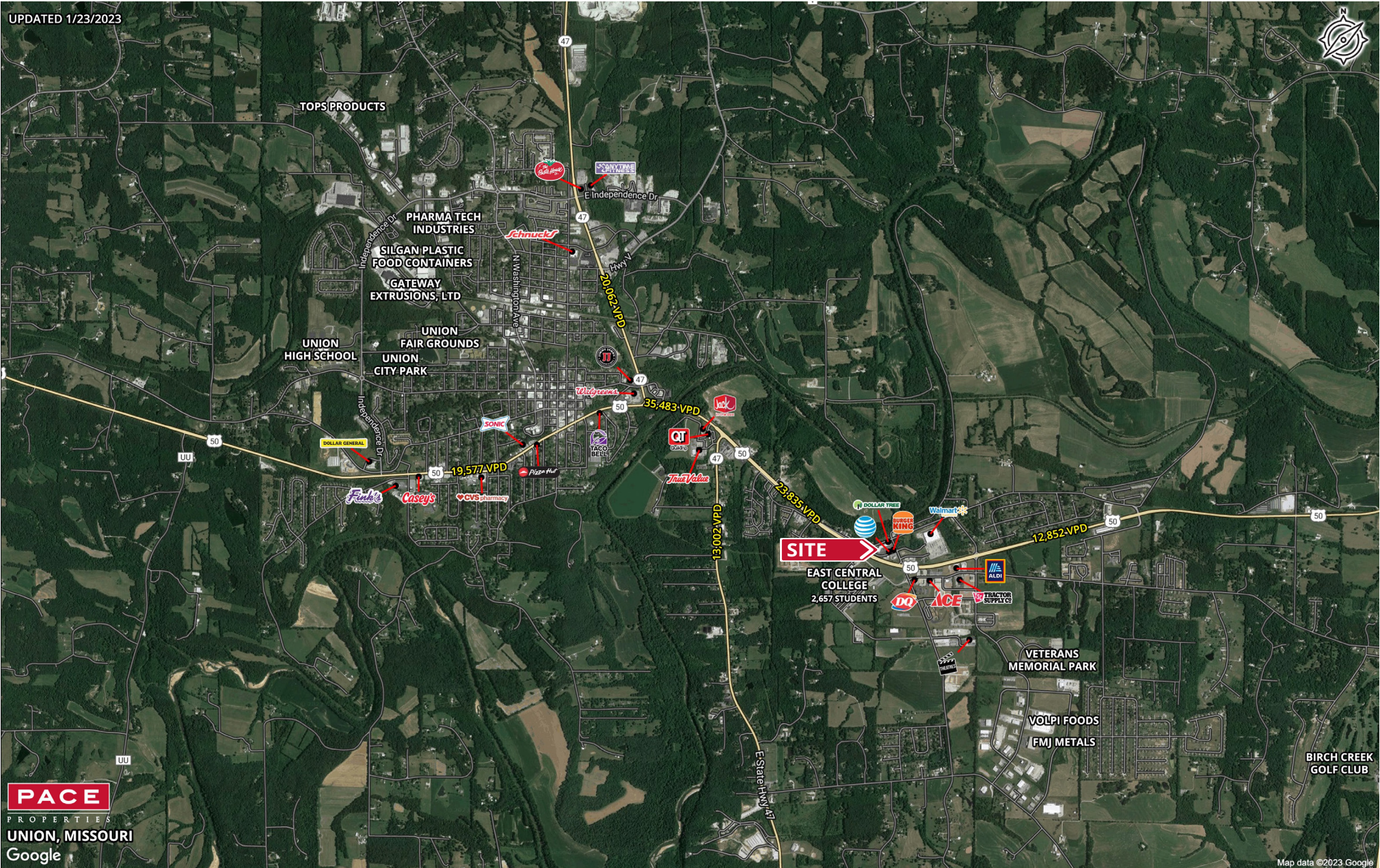
rgeringer@paceproperties.com

PACEPROPERTIES.COM | 314.968.9898

1401 South Brentwood Boulevard, Suite 900 | St. Louis, Missouri 63144

The information contained herein is not warranted, although it has been obtained from the owner/landlord of the subject property or from other sources that Pace Properties, Inc. deems reliable, and is subject to change without notice. Owner/landlord and Pace Properties, Inc. make no representations as to the environmental condition of the subject property and recommend tenant's independent investigation.

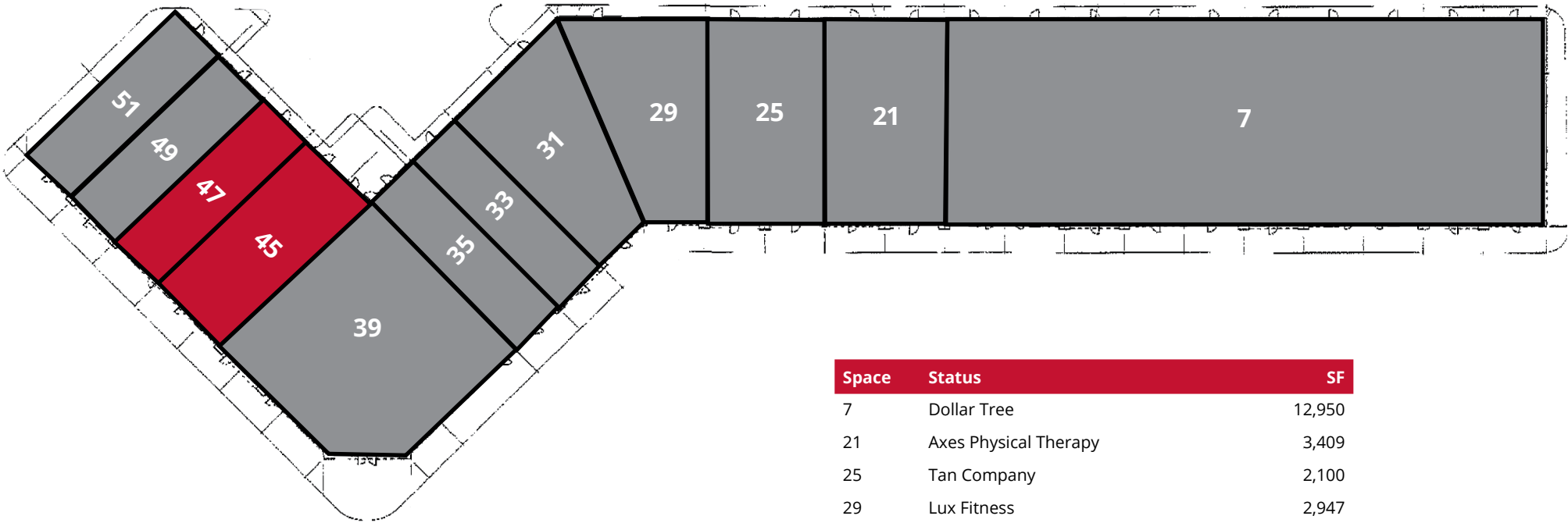
Trade Area Aerial



PACEPROPERTIES.COM | 314.968.9898
1401 South Brentwood Boulevard, Suite 900 | St. Louis, Missouri 63144

The information contained herein is not warranted, although it has been obtained from the owner/landlord of the subject property or from other sources that Pace Properties, Inc. deems reliable, and is subject to change without notice. Owner/landlord and Pace Properties, Inc. make no representations as to the environmental condition of the subject property and recommend tenant's independent investigation.

Site Plan



Space	Status	SF
7	Dollar Tree	12,950
21	Axes Physical Therapy	3,409
25	Tan Company	2,100
29	Lux Fitness	2,947
31	Subway	2,417
33	Sun Loan Company	1,400
35	Union Nails	1,400
39	GoHealth Urgent Care	4,737
45	AVAILABLE	1,992
47	AVAILABLE	1,400
49	Ryse Up Bungee	1,400
51	Veterinary Clinic	1,462

The information contained herein is not warranted, although it has been obtained from the owner/landlord of the subject property or from other sources that Pace Properties, Inc. deems reliable, and is subject to change without notice. Owner/landlord and Pace Properties, Inc. make no representations as to the environmental condition of the subject property and recommend tenant's independent investigation.

Outlot Site Plan

