



2020 DEMOGRAPHICS

1 Mile | 3 Miles | 5 Miles



Population

4,863 | 35,435 | 44,594



Employees

14,344 | 35,690 | 38,187



Median Household Income

\$38,943 | \$48,274 | \$50,908

RETAIL FOR LEASE

West Town Center | 3036 William Street | Cape Girardeau, Missouri 63701

4,970 SF | Call for Details | Triple Nets: \$3.98/SF

PROPERTY DETAILS

Strip center next to Best Buy and across the street from West Park Mall

Regional shopping hub for southeastern Missouri

Easy Interstate access

Excellent visibility from William Street

Pylon signage available

William Street - 26,774 VPD

Connor Wiemann

314.785.7627

cwiemann@paceproperties.com

Mike Sweargin

314.785.7625

msweargin@paceproperties.com

Patrick Willett

314.785.7631

pwillett@paceproperties.com

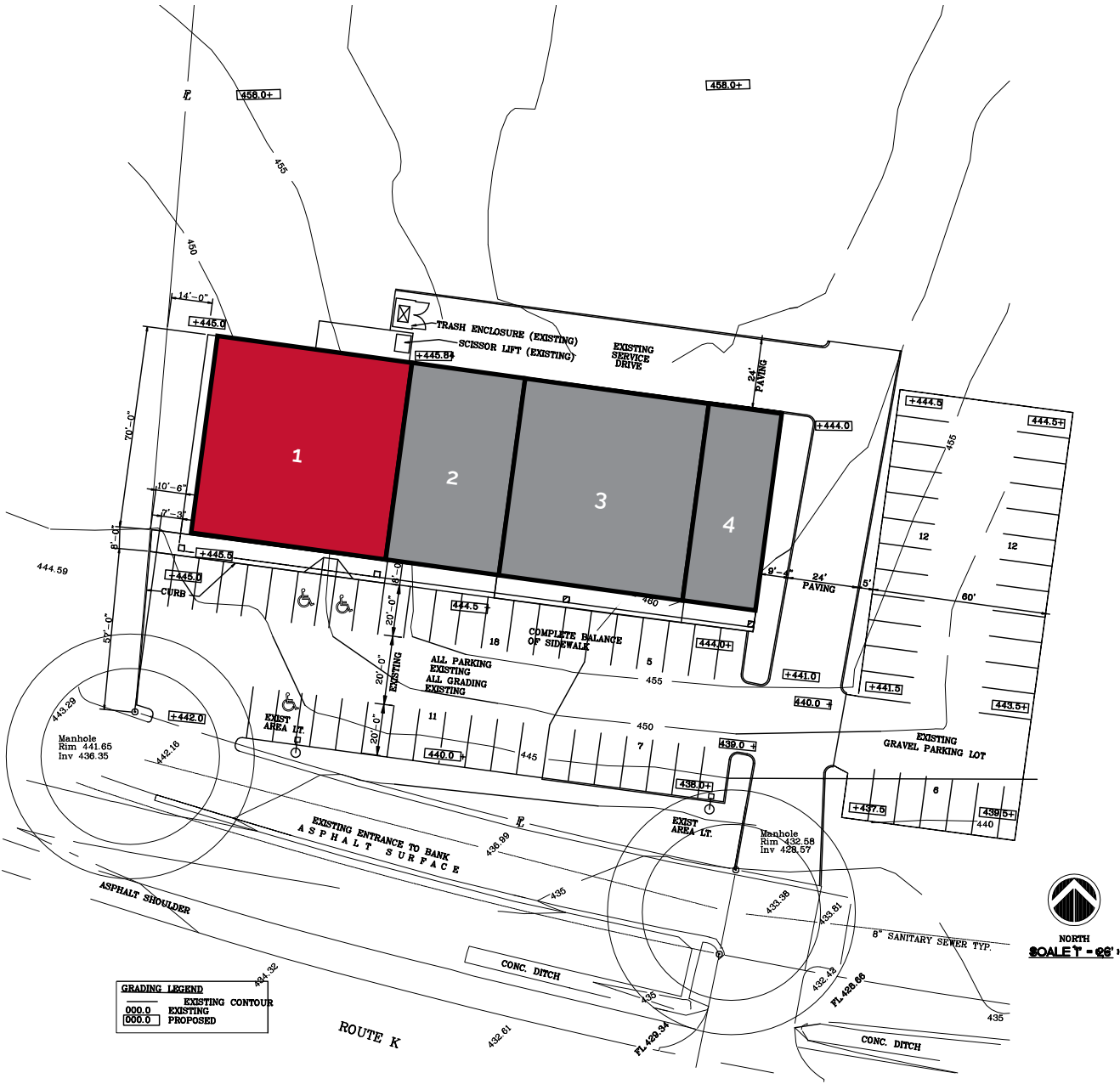
PACEPROPERTIES.COM | 314.968.9898

1401 South Brentwood Boulevard, Suite 900 | St. Louis, Missouri 63144

The information contained herein is not warranted, although it has been obtained from the owner/landlord of the subject property or from other sources that Pace Properties, Inc. deems reliable, and is subject to change without notice. Owner/landlord and Pace Properties, Inc. make no representations as to the environmental condition of the subject property and recommend tenant's independent investigation.

Site Plan

Space	Status	SF
1	AVAILABLE	4,970
2	Hansel & Gretel Boutique	2,800
3	Vision Works	4,550
4	Pho 8 Noodle Shop	1,750
TOTAL		14,070



The information contained herein is not warranted, although it has been obtained from the owner/landlord of the subject property or from other sources that Pace Properties, Inc. deems reliable, and is subject to change without notice. Owner/landlord and Pace Properties, Inc. make no representations as to the environmental condition of the subject property and recommend tenant's independent investigation.