

2024 DEMOGRAPHICS

1 Mile | 3 Miles | 5 Miles



Population

2,827 | 9,700 | 22,919



Daytime Population

2,255 | 6,275 | 16,904



Median Household Income

\$81,150 | \$85,162 | \$77,214

RETAIL FOR SALE

1308 South Division Street | Carterville, Illinois 62918

3,588 SF on 1.19 Acres | Sale Price: \$395,000

PROPERTY DETAILS

Former quick service restaurant with drive-thru and pylon sign

Exhaust hoods, walk-in cooler/freezer, menu boards, some seating package included

Excellent highway location adjacent to Crab Orchard Lake

Very good visibility and convenient access from Route 13

City incentives potentially available

Ashley Krekovich

314.785.7613

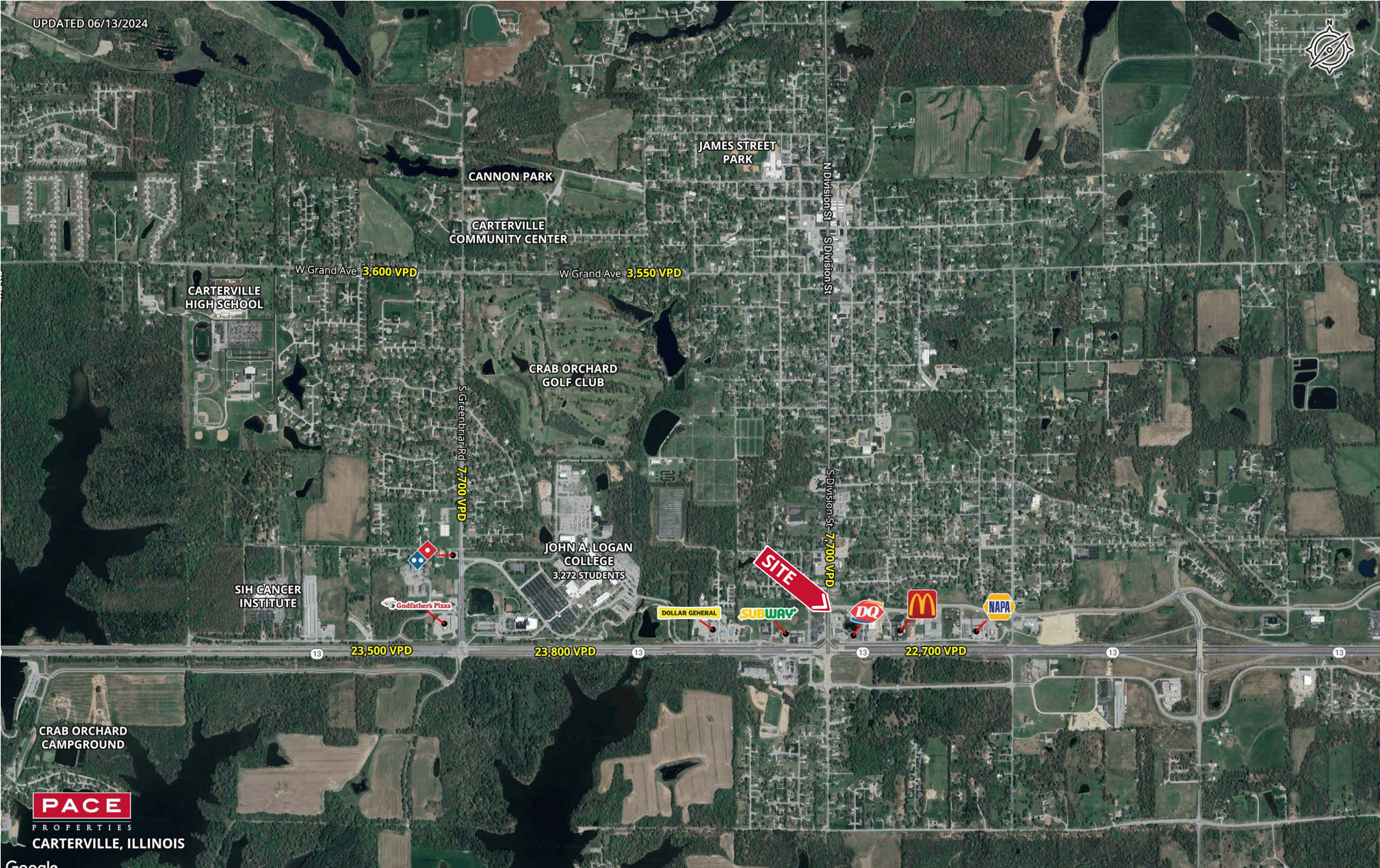
akrekovich@paceproperties.com

PACEPROPERTIES.COM | 314.968.9898

1401 South Brentwood Boulevard, Suite 900 | St. Louis, Missouri 63144

The information contained herein is not warranted, although it has been obtained from the owner/landlord of the subject property or from other sources that Pace Properties, Inc. deems reliable, and is subject to change without notice. Owner/landlord and Pace Properties, Inc. make no representations as to the environmental condition of the subject property and recommend tenant's independent investigation.

Trade Area Aerial



PACEPROPERTIES.COM | 314.968.9898

1401 South Brentwood Boulevard, Suite 900 | St. Louis, Missouri 63144

The information contained herein is not warranted, although it has been obtained from the owner/landlord of the subject property or from other sources that Pace Properties, Inc. deems reliable, and is subject to change without notice. Owner/landlord and Pace Properties, Inc. make no representations as to the environmental condition of the subject property and recommend tenant's independent investigation.



Click or scan to view virtual tour!

