

Price Reduction!



2024 DEMOGRAPHICS

5 Mile | 10 Miles | 15 Miles



Population

5,213 | 11,892 | 36,498



Daytime Population

4,932 | 9,204 | 33,676



Median Household Income

\$45,195 | \$49,905 | \$52,827

RETAIL FOR LEASE

601 S Main St | Charleston, Missouri 63834

8,351 SF on 0.76 Acres | Lease Rate: \$9.50/SF, NNN

PROPERTY DETAILS

Former dollar store available immediately

Situated at hard corner with great access

Great signage & visibility

Located in Charleston, Missouri, with great access to I-57

South Main Street - 5,746 VPD

Lauren Berry, CCIM

314.785.7632

lberry@paceproperties.com

John Shuff

314.785.7630

jshuff@paceproperties.com

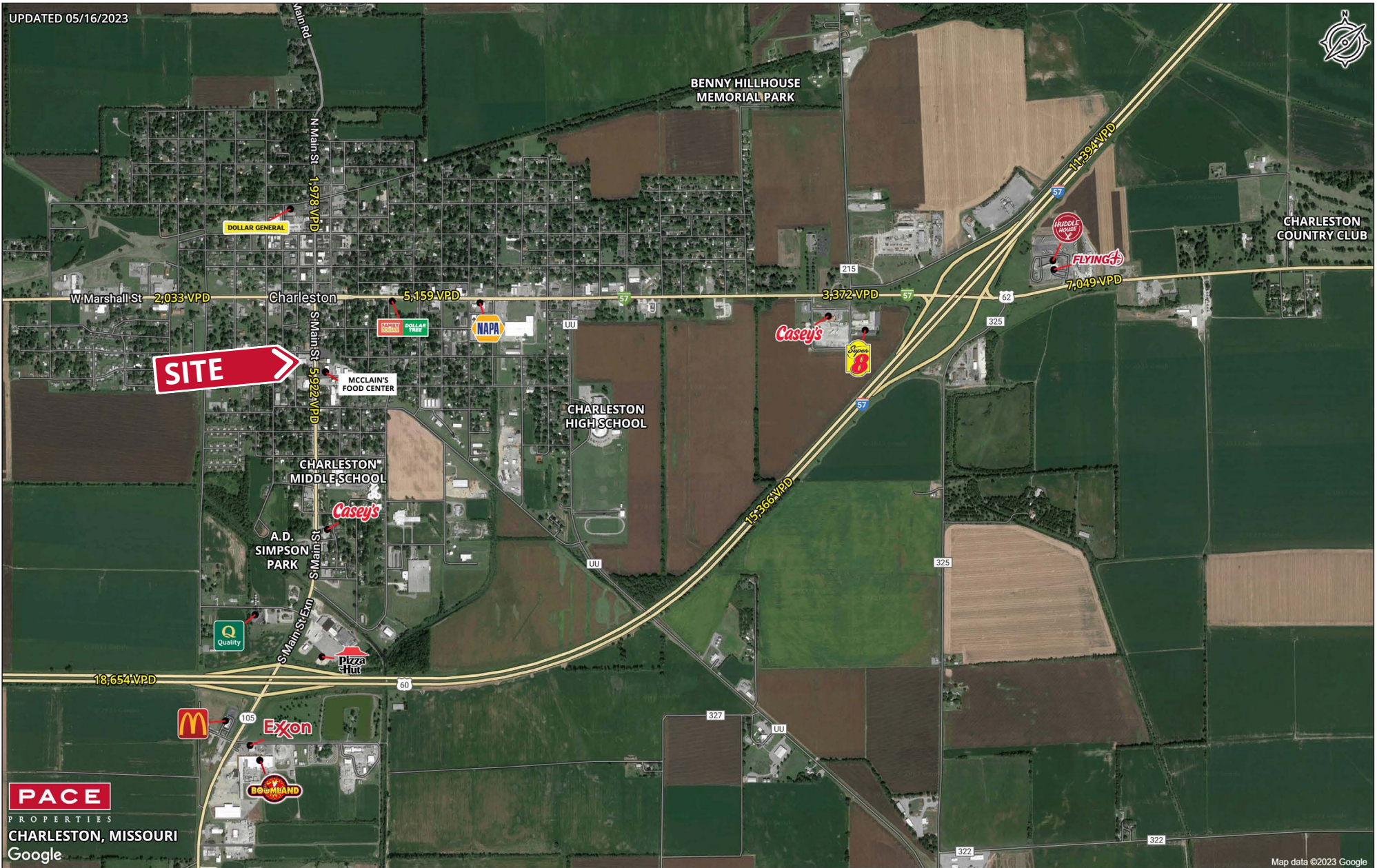
PACEPROPERTIES.COM | 314.968.9898

1401 South Brentwood Boulevard, Suite 900 | St. Louis, Missouri 63144

The information contained herein is not warranted, although it has been obtained from the owner/landlord of the subject property or from other sources that Pace Properties, Inc. deems reliable, and is subject to change without notice. Owner/landlord and Pace Properties, Inc. make no representations as to the environmental condition of the subject property and recommend tenant's independent investigation.

Trade Area Aerial

UPDATED 05/16/2023



PACE
PROPERTIES
CHARLESTON, MISSOURI
Google

Map data ©2023 Google

PACEPROPERTIES.COM | 314.968.9898

1401 South Brentwood Boulevard, Suite 900 | St. Louis, Missouri 63144

The information contained herein is not warranted, although it has been obtained from the owner/landlord of the subject property or from other sources that Pace Properties, Inc. deems reliable, and is subject to change without notice. Owner/landlord and Pace Properties, Inc. make no representations as to the environmental condition of the subject property and recommend tenant's independent investigation.