



2024 DEMOGRAPHICS

5 Mile | 10 Miles | 15 Miles



Population

10,502 | 12,844 | 16,463



Daytime Population

9,495 | 10,609 | 12,391



Median Household Income

\$61,057 | \$63,562 | \$64,762

FOR LEASE

720 Washington Street | Chillicothe, Missouri 64601

1,600 SF | \$30.00/SF, \$4.00/SF NNN

PROPERTY DETAILS

New construction, turkey space available
Encap with great visibility and drive-thru option
Hard corner at center of national retailers
Fast access to/from Highway 36
Construction completion estimated Summer 2022
Pylon signage available
Washington Street - 19,898 VPD

Connor Wiemann

314.785.7627

cwiemann@paceproperties.com

John Shuff

314.785.7630

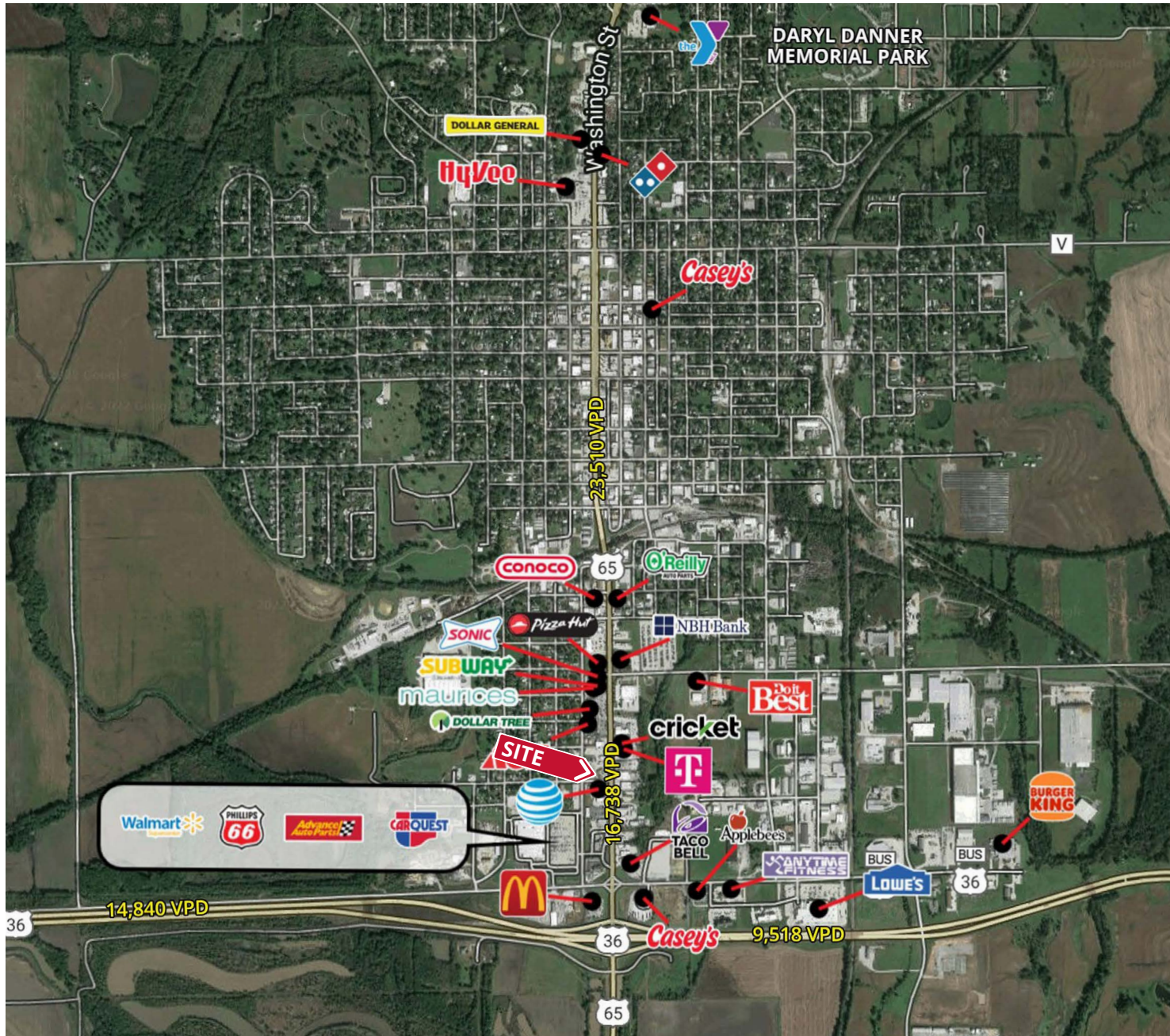
jshuff@paceproperties.com

PACEPROPERTIES.COM | 314.968.9898

1401 South Brentwood Boulevard, Suite 900 | St. Louis, Missouri 63144

The information contained herein is not warranted, although it has been obtained from the owner/landlord of the subject property or from other sources that Pace Properties, Inc. deems reliable, and is subject to change without notice. Owner/landlord and Pace Properties, Inc. make no representations as to the environmental condition of the subject property and recommend tenant's independent investigation.

Trade Area Aerial

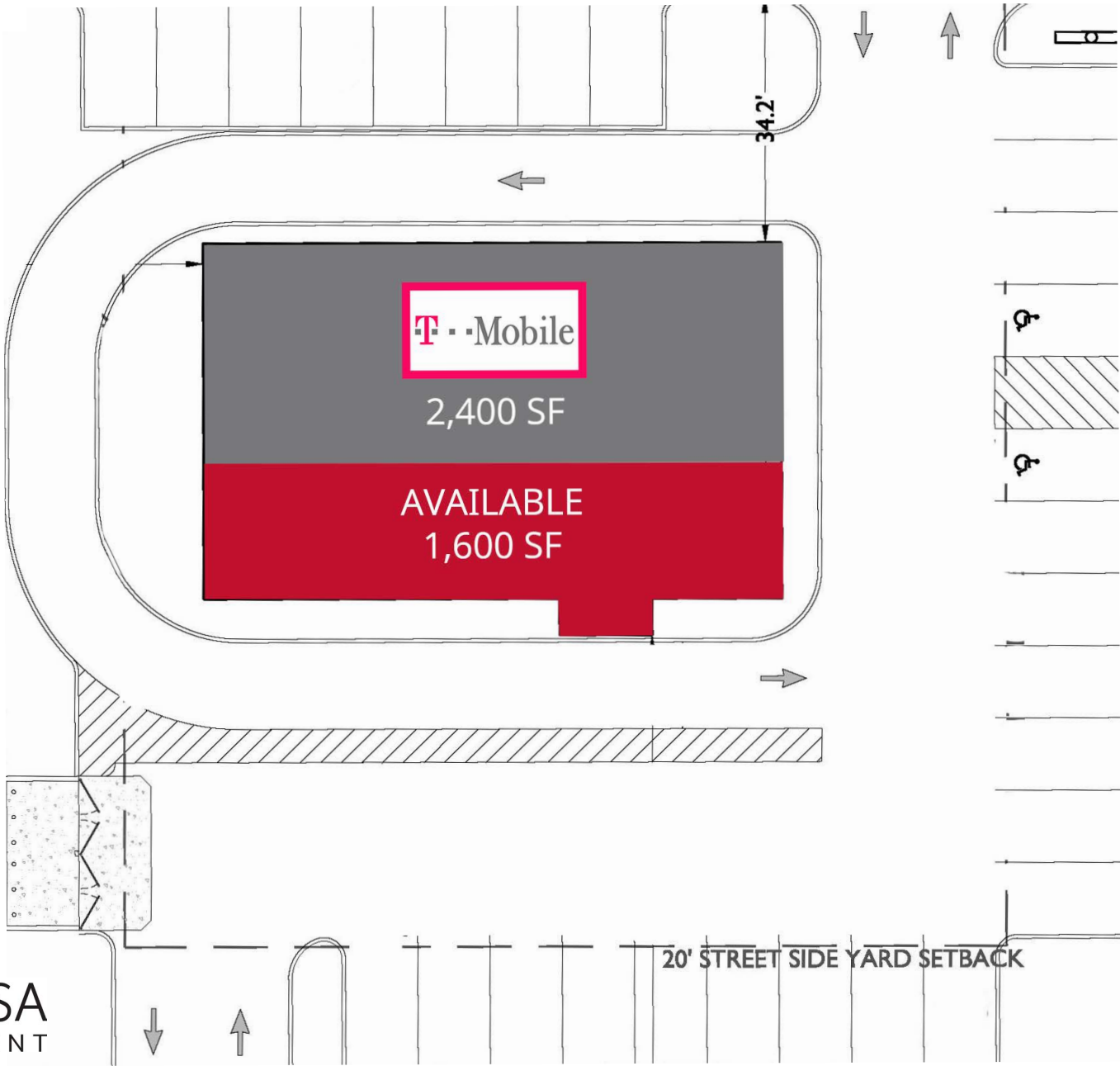


PACEPROPERTIES.COM | 314.968.9898

1401 South Brentwood Boulevard, Suite 900 | St. Louis, Missouri 63144

The information contained herein is not warranted, although it has been obtained from the owner/landlord of the subject property or from other sources that Pace Properties, Inc. deems reliable, and is subject to change without notice. Owner/landlord and Pace Properties, Inc. make no representations as to the environmental condition of the subject property and recommend tenant's independent investigation.

Site Plan



Developed by:
ALRIG USA
DEVELOPMENT

PACEPROPERTIES.COM | 314.968.9898

1401 South Brentwood Boulevard, Suite 900 | St. Louis, Missouri 63144

The information contained herein is not warranted, although it has been obtained from the owner/landlord of the subject property or from other sources that Pace Properties, Inc. deems reliable, and is subject to change without notice. Owner/landlord and Pace Properties, Inc. make no representations as to the environmental condition of the subject property and recommend tenant's independent investigation.