

2024 DEMOGRAPHICS

1 Mile | 3 Miles | 5 Miles



Population

8,500 | 73,039 | 194,910



Daytime Population

16,701 | 65,263 | 185,265



Median Household Income

\$104,829 | \$116,477 | \$107,444

RETAIL FOR SALE

9960 Watson Road | Crestwood, Missouri 63126

12,414 SF on 2.03 Acres | Call for Details

PROPERTY DETAILS

Free-standing former automotive repair building

8-bay facility with the ability to create more within the building

Proximity to Dierbergs anchored shopping center
and Bass Pro Shop

Watson Road - 18,108 VPD

John Shuff

314.785.7630

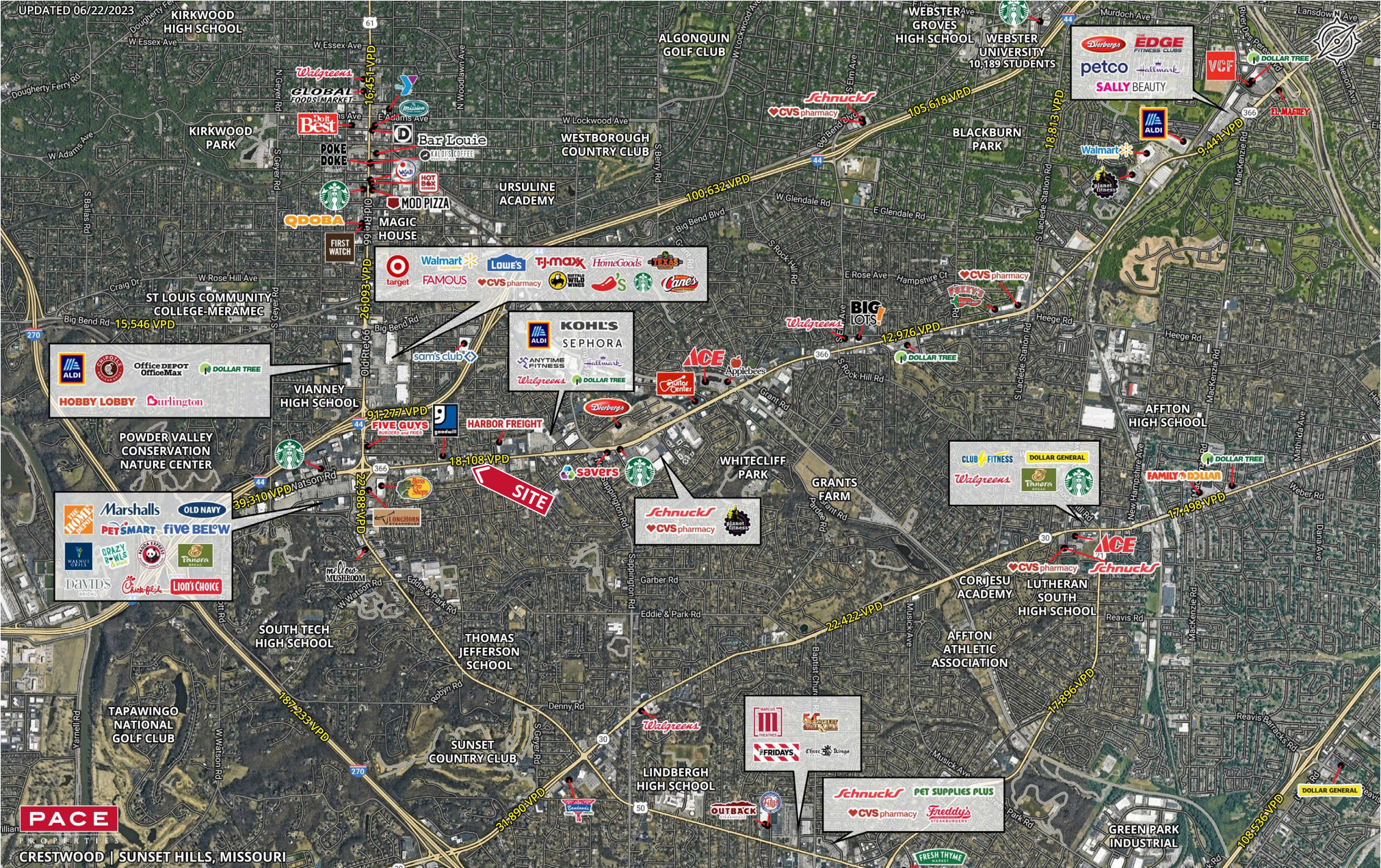
jshuff@paceproperties.com

PACEPROPERTIES.COM | 314.968.9898

1401 South Brentwood Boulevard, Suite 900 | St. Louis, Missouri 63144

The information contained herein is not warranted, although it has been obtained from the owner/landlord of the subject property or from other sources that Pace Properties, Inc. deems reliable, and is subject to change without notice. Owner/landlord and Pace Properties, Inc. make no representations as to the environmental condition of the subject property and recommend tenant's independent investigation.

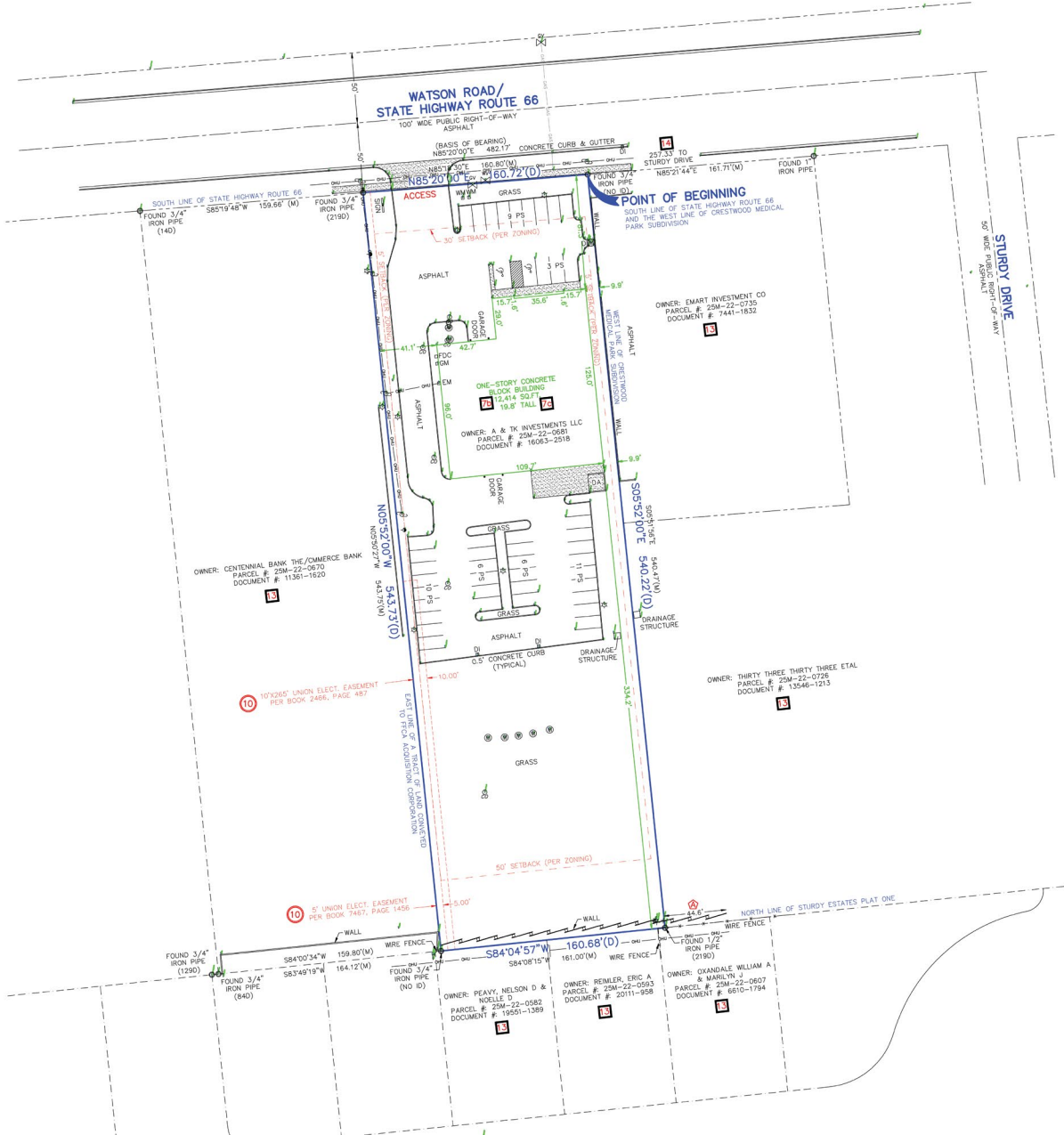
Trade Area Aerial



The information contained herein is not warranted, although it has been obtained from the owner/landlord of the subject property or from other sources that Pace Properties, Inc. deems reliable, and is subject to change without notice. Owner/landlord and Pace Properties, Inc. make no representations as to the environmental condition of the subject property and recommend tenant's independent investigation.



Survey



PACEPROPERTIES.COM | 314.968.9898

1401 South Brentwood Boulevard, Suite 900 | St. Louis, Missouri 63144

The information contained herein is not warranted, although it has been obtained from the owner/landlord of the subject property or from other sources that Pace Properties, Inc. deems reliable, and is subject to change without notice. Owner/landlord and Pace Properties, Inc. make no representations as to the environmental condition of the subject property and recommend tenant's independent investigation.