

## 2023 DEMOGRAPHICS

1 Mile | 3 Miles | 5 Miles



### Population

2,497 | 46,243 | 174,792



### Daytime Population

2,354 | 66,748 | 177,333



### Median Household Income

\$253,243 | \$169,468 | \$134,365

# RETAIL FOR LEASE

Blacksmith Grove

13360 Clayton Road | Town & Country, Missouri 63131

1,389 SF | Lease Rate: Call for Details

## PROPERTY DETAILS

12,000 SF retail development on Clayton Road  
in affluent Town & Country

Quality construction with high-end finishes

Prominent signage

Ample parking - 135 spaces

Clayton Road - 8,394 VPD

**Kate Grewe**

314.785.7662

kgrewe@paceproperties.com

**John Shuff**

314.785.7630

jshuff@paceproperties.com

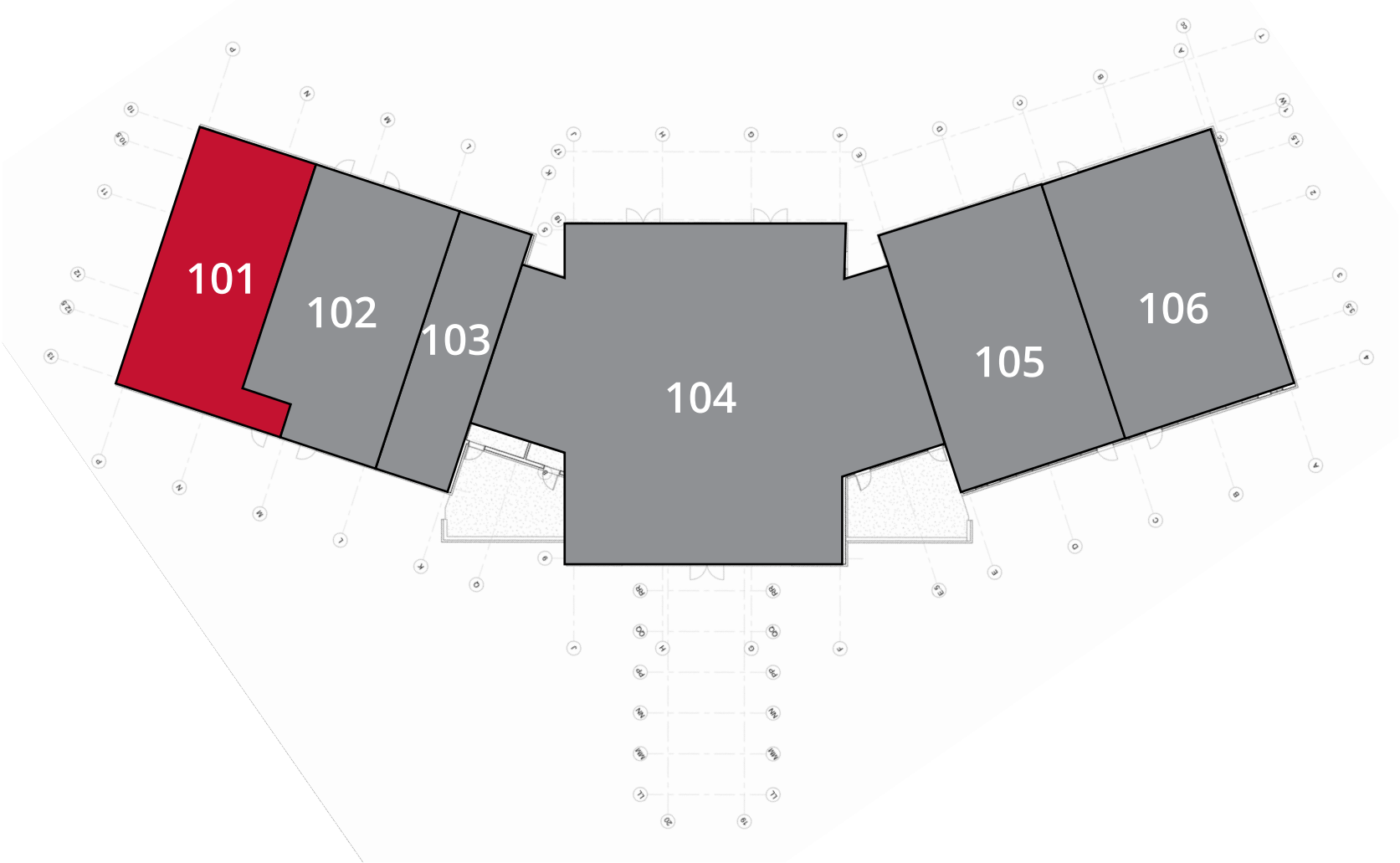
[PACEPROPERTIES.COM](https://www.paceproperties.com) | 314.968.9898

1401 South Brentwood Boulevard, Suite 900 | St. Louis, Missouri 63144

The information contained herein is not warranted, although it has been obtained from the owner/landlord of the subject property or from other sources that Pace Properties, Inc. deems reliable, and is subject to change without notice. Owner/landlord and Pace Properties, Inc. make no representations as to the environmental condition of the subject property and recommend tenant's independent investigation.

# Site Plan

Space	Status	SF
101	AVAILABLE	1,389
102	Spotted Pig	1,362
103	The Diamond Bar	900
104	Cleaver & Cocktail	4,774
105	Wild Crush	1,801
106	Adon Nails & Spa	1,812

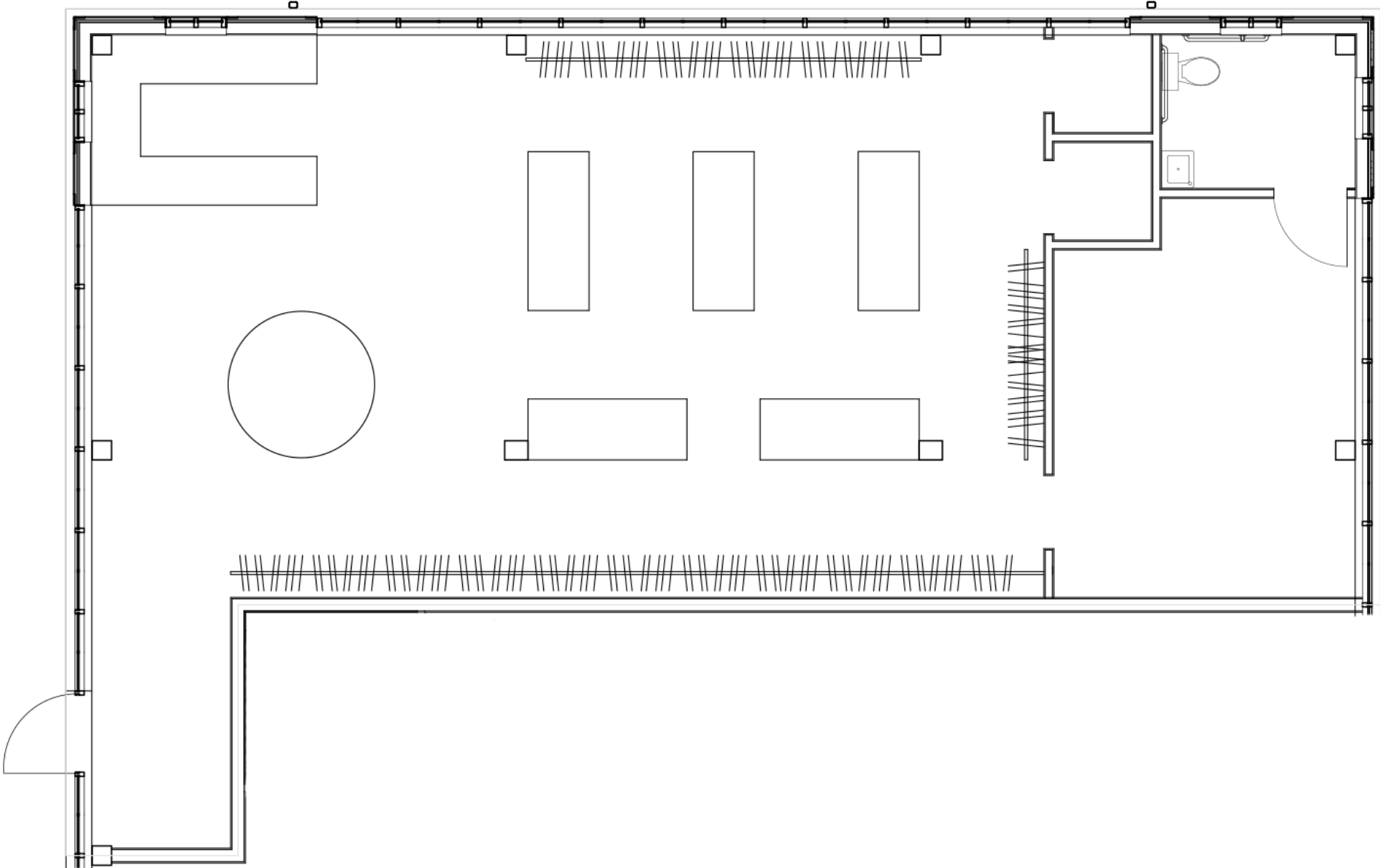


PACEPROPERTIES.COM | 314.968.9898

1401 South Brentwood Boulevard, Suite 900 | St. Louis, Missouri 63144

The information contained herein is not warranted, although it has been obtained from the owner/landlord of the subject property or from other sources that Pace Properties, Inc. deems reliable, and is subject to change without notice. Owner/landlord and Pace Properties, Inc. make no representations as to the environmental condition of the subject property and recommend tenant's independent investigation.

# Space 101 Plan



PACEPROPERTIES.COM | 314.968.9898

1401 South Brentwood Boulevard, Suite 900 | St. Louis, Missouri 63144

The information contained herein is not warranted, although it has been obtained from the owner/landlord of the subject property or from other sources that Pace Properties, Inc. deems reliable, and is subject to change without notice. Owner/landlord and Pace Properties, Inc. make no representations as to the environmental condition of the subject property and recommend tenant's independent investigation.

